



OTAGO
POLYTECHNIC
Te Kura Matatini ki Otago

DUNEDIN ON-CAMPUS

Open Day

Monday 10 August

2020



COVER IMAGE

The artwork depicts a female elder and a young female student exchanging a hongi. The mural was designed and painted by Montreal artist Fluke and his assistant, Talia Carin in 2015.



MURAL LOCATION

Castle Street Lecture Theatres,
University of Otago.



Kia ora koutou

Dunedin is a vibrant student city, and a safe and welcoming place for you to study, live and work.

Otago Polytechnic's Dunedin campus is in the heart of the student quarter alongside the University of Otago – it's the perfect location for learning and living.

Dunedin has everything you need for a great lifestyle. It has a distinctive arts, culture and heritage pedigree. There are plenty of gigs, exhibitions, events to attend, and enticing eateries to enjoy. As New Zealand's incubator for IT, entrepreneurship and fashion, Dunedin is innovative and creative. Plus, it boasts rare wildlife and spectacular scenery, including many gorgeous sandy beaches.

Get a taste of Dunedin student life for yourself at our Dunedin Tertiary Open Days. You can explore our campus, learn about the programmes and services we offer, and find out for yourself why this southern city is one of the country's best!



Flip the booklet for the University of Otago programme

Contents

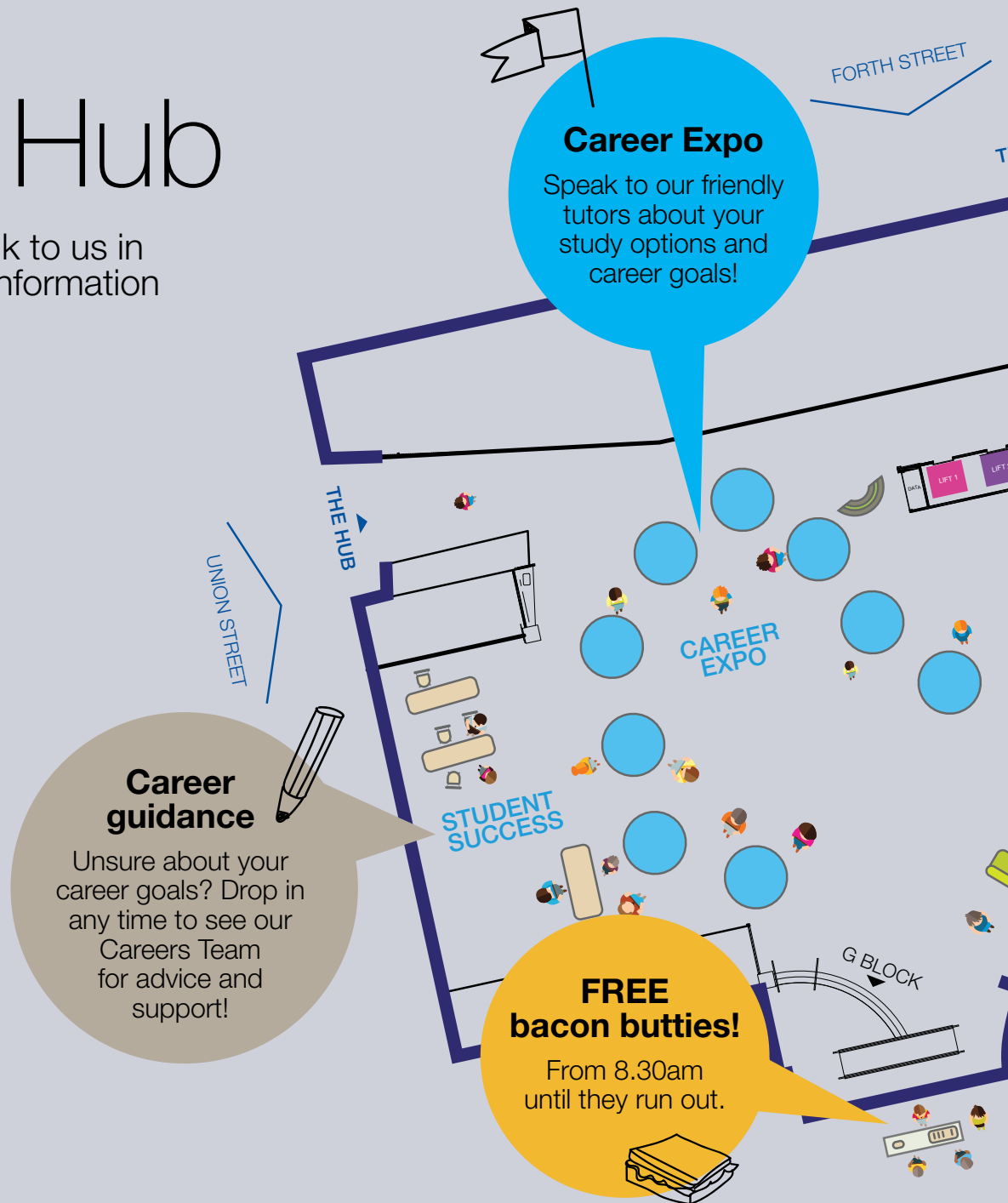
The Hub Map	04
Campus Map	06
Student Support Services	08
Te Pā Tauira – Otago Polytechnic Student Village	09
NZQA Qualifications	11
Monday 10 August Programme	12
Central Campus	24
Programme Timetable	25

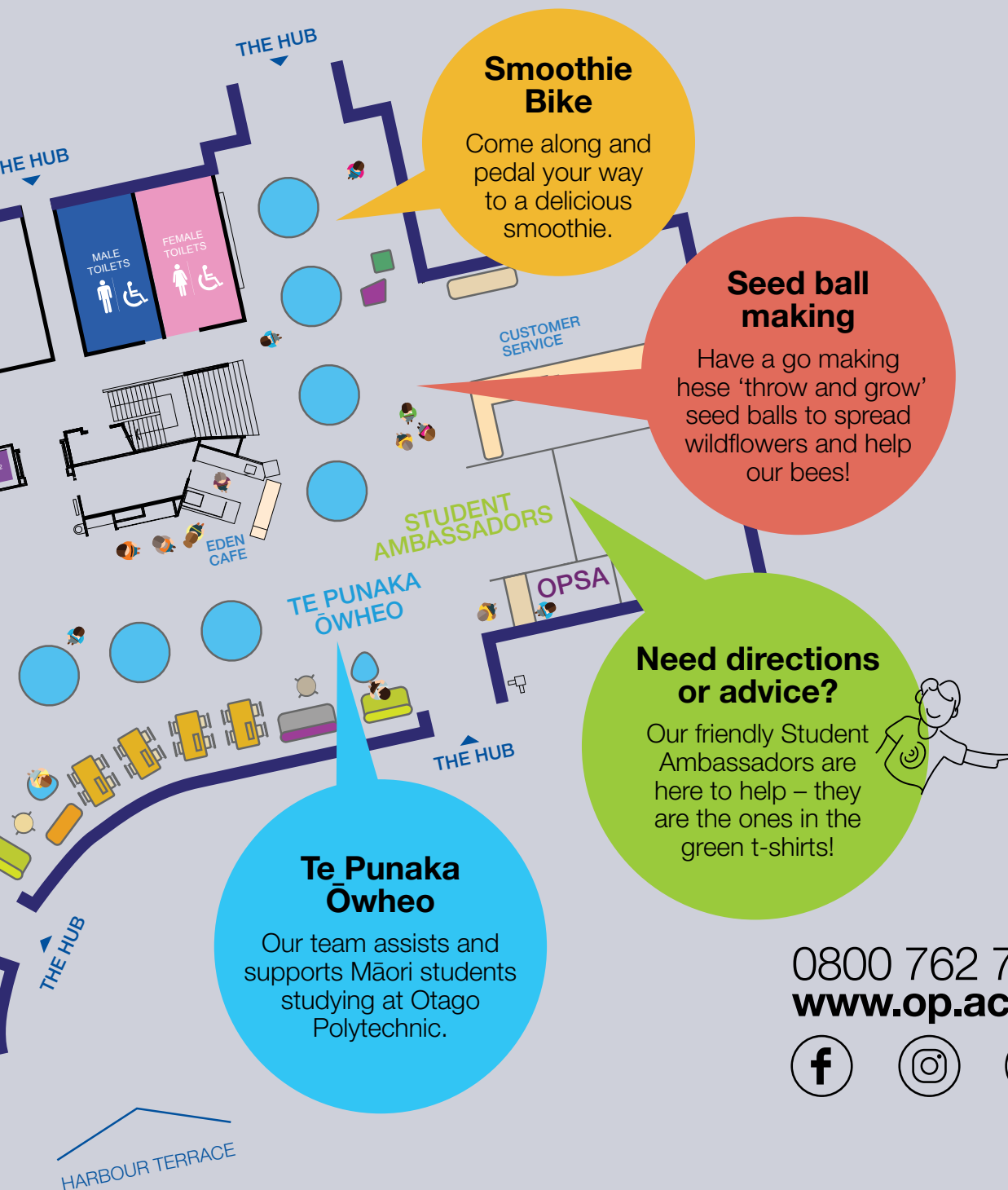
www.op.ac.nz



The Hub

Come and talk to us in
The Hub for information
and advice!





0800 762 786
www.op.ac.nz



Information Session Locations

Leadership for Change
Social Services
Beauty Therapy
Hairdressing
Early Childhood
Animal Health and Veterinary Nursing
Massage Therapy

CENTRAL CAMPUS

Farming	Brewing
Cookery	Snowsports
Horticulture	Stonemasonry
Outdoor Adventure	
Sports Turf Management	
Avalanche Safety	Apiculture
Bicycle Mechanics	

Automotive,
Mechanical and
Electrical Trades

Electrical
Engineering
(Diploma/Degree)

Te Punaka
Ōwheo

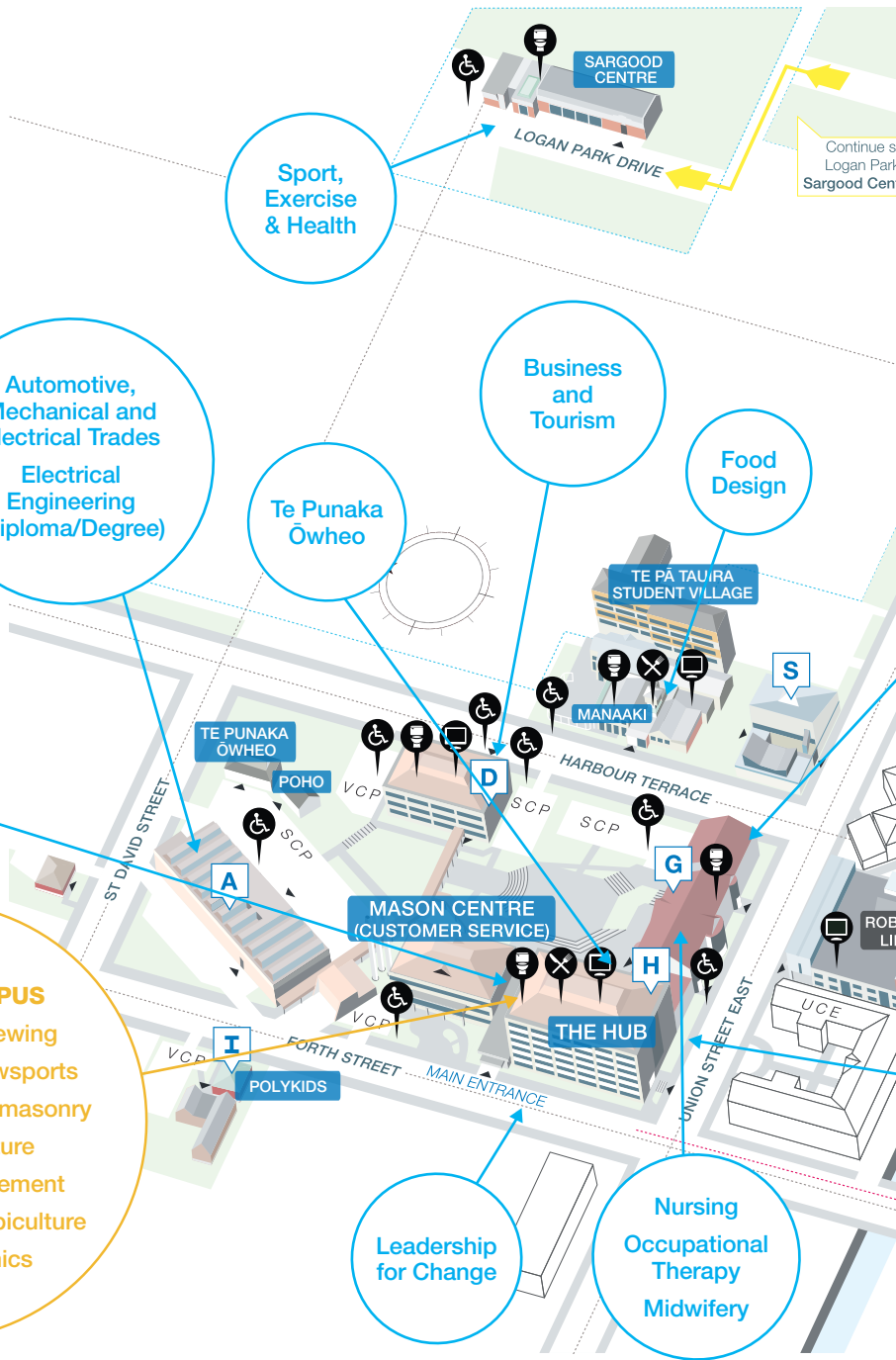
Sport,
Exercise
& Health

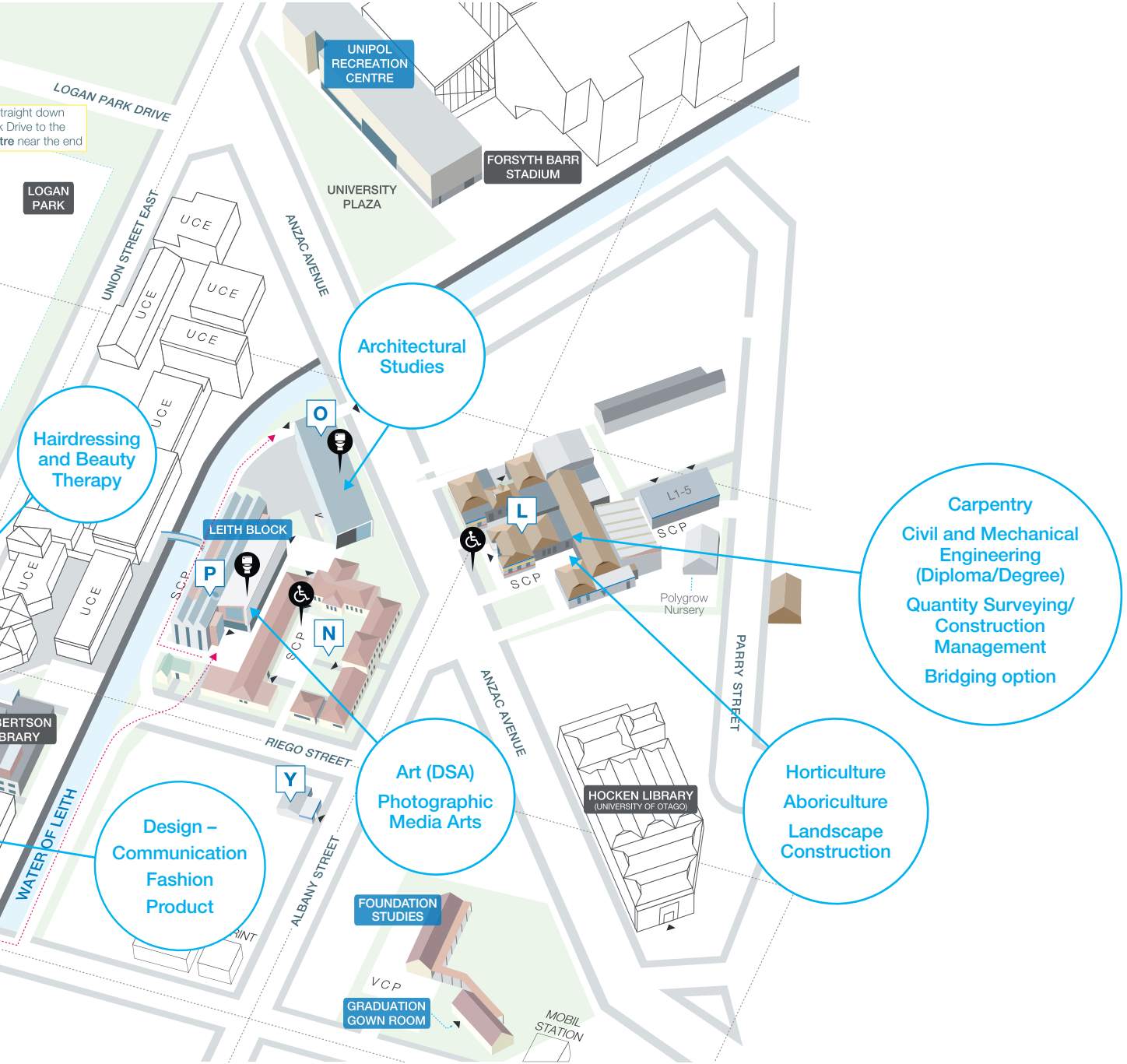
Business
and
Tourism

Food
Design

Leadership
for Change

Nursing
Occupational
Therapy
Midwifery





Student support services

Starting life as a new tertiary student can be exciting as well as challenging. Our Student Success team is here to help you through any issues that might arise, and make sure your time here is rewarding and fun!

Student Success team

studentsuccess@op.ac.nz

Where The Hub

Student Advisors

Our Student Advisors are available to talk in person, via phone or email anytime. They can help you with any personal problems and study issues as you settle into life at Otago Polytechnic, and offer continued assistance throughout the academic year.

Disability and Wellbeing Support

Our Disability and Wellness Advisor provides support tailored to your individual needs. This may include classroom note-takers, readers and writers, tutors, equipment, adaptive technology, orientation and liaison with lecturing staff and community agencies.

International support

The International Student Advisors are dedicated to assisting international students to settle into tertiary study to ensure that you get personalised support while studying.

Other support services include:

- > Learning advice
- > Student Health Centre
- > Chaplain
- > Counselling services
- > Careers services
- > IT support

Pasifika support

Litea Ikahihifo provides support and assistance to Pacific Islands students. Those who identify as being of Pacific Islands descent will be contacted by Litea. Regular fono are also held during the year to update students on new activities and support opportunities.

Pasifika students have their own space (G107) which has kitchen facilities, computers and a place to study.

Te Punaka Ōwheo

The team at Te Punaka Ōwheo assists and supports Māori students studying at Otago Polytechnic. They can also provide information on a range of scholarship opportunities.

Poho is a dedicated space on campus for Māori students. Te Punaka Ōwheo and Poho can be found by A Block.

Come see us

Where The Hub

When 12.00pm – 4.00pm, all day Monday

Staff will be on hand to talk about what support we can offer and where to find information about Māori scholarships.



www.opsa.org.nz

Where The Hub

The Otago Polytechnic Students' Association (OPSA) is an independent organisation run by students for students, and provides a range of services, assistance, facilities and excitement!

Services and facilities

OPSA provides access to UNIPOL recreation centre, orientation and social events, Student Job Search, student discounts, your student ID card and much more!

Representation and help

OPSA offers services like advocacy, representation, grants, financial support and advice. Students can seek confidential assistance from OPSA to help with a range of issues including academic, personal and tenancy concerns.



Te Pā Tauira Otago Polytechnic Student Village

The 231-bed furnished residential village offers fully-catered single rooms (dorms), and self-catered studios and four-bedroom apartments. With its prime location, you will enjoy a short walk to campus whilst still only being minutes from the city centre. Purpose-built for students, it's the perfect home to enjoy student life to the full within an exciting and supportive community.

Features and amenities include:

You will benefit from:

- > Being part of an exciting and supportive community
- > A contemporary and modern living environment
- > A unique residential programme
- > In-house resident advisors
- > A chance to make new friends

Amenities and advantages include:

- > Common rooms, a pool table and sports grounds
- > Near to UniPol gym, Forsyth Barr Stadium and the Robertson Library
- > Catered dorm
- > WiFi
- > Secure bike storage
- > Edible gardens
- > Double-glazed windows and high-level insulation
- > Laundry

Tours on request

Come and see what it would be like to live in our Village while you study.

Where: The Hub

When: All day, Monday

For more information visit: www.opsv.co.nz

SUNDAY TOURS

Where: Main building entrance
(enter from the carpark on Union Street)

When: 9.30am–3.30pm every hour

Phone: **0800 677 801**

After Hours Phone: **0800 677 802**

Email: **OPSV@clv.co.nz**

Explore Otago Polytechnic

At Otago Polytechnic we provide practical, hands-on learning that will prepare you for an exciting career.

We have small class sizes, allowing you to get the most from our award-winning lecturers, and great student support services.

Employers also love our enthusiastic, work-ready graduates so studying with us is the first step towards getting your dream job!



Being capable means being work-ready

I am Capable empowers learners to develop work-ready capabilities, and connects the right learners to the right employers.

- > Develop the capabilities that employers want and build a profile online.
- > Develop evidence that is endorsed by your tutors.
- > Become more employable and ready for work.
- > Have employers search your profile.

Come and visit us at the I am Capable desk in The Hub on Monday.

Qualifications



NEW ZEALAND QUALIFICATIONS AUTHORITY
MANA TOHU MĀTAURANGA O AOTEAROA

Our world-class qualifications are approved by the New Zealand Qualifications Authority.

Foundation and Bridging Certificates	6 months – 1 year
Certificates	6 months – 1 year
Diplomas	1 – 2 years
Bachelor's Degrees	3 years
Graduate Certificates or Graduate Diplomas	6 months – 1 year
Postgraduate Certificates or Postgraduate Diplomas	6 months – 1 year
Bachelor's Degrees with Honours	1 year
Master's Degrees	1 – 2 years
Doctoral Degrees	3 years

Monday 10 August programme

Certificate

Foundation Studies

Where The Hub

When 12.00pm – 1.00pm, Monday

New Zealand Certificate in Foundation Skills (Level 2)

Get a taste of what tertiary learning is all about and gain essential skills for study and work!

This programme is great if you want to gain confidence and ability in literacy, numeracy and digital competency. You can study in either a general study or work context. The work context includes practical workshops and community based experiences.

Certificate in Land Skills (Farm Hand) (Level 2)

Looking for a way to get some hands-on learning and increase your chances of getting a job?

This programme, offered in partnership with the Malcam Trust, has a great mix of study and hands-on experience and will give you the skills you need to work in farming, agriculture, horticulture, conservation or other outdoor-related areas.

New Zealand Certificate in Study and Career Preparation (Level 3)

Strands include bridging to: Beauty, Health, Work and Study.

This programme offers you the chance to improve your study skills and prepare for higher level learning. It includes either a general study context or a work context. Along with improving your reading, writing, presenting and computer skills, you will also gain valuable employability skills such as CV and interview preparation.

Depending on the course you choose, this programme offers work experience opportunities.

Certificate

English Language

Where The Hub

When 1.00pm – 2.00pm, Monday

Come and speak to our teaching staff today (for ESOL students, whether International or Permanent Residents, and for domestic students needing to improve their academic skills.).

For English Language, your level will be assessed before placement in one of our Level 2, 3 or 4 programmes, which will then lead you into our mainstream programmes.



Horticulture

Horticulture > Arboriculture > Landscape Construction

TOURS

Where Leaving from the L Block foyer,
Anzac Avenue

When 11.15am – 11.45am and 1.30pm – 2.00pm,
Monday

Horticulture workers assist in the design, production and maintenance of plants, gardens and landscapes for both local and international markets. The industry is extremely diverse. As a horticulturist, you may specialise in a number of areas:

- > Arboriculture (*pruning, felling, transplanting, and maintaining the health of trees and shrubs*)
- > Amenity horticulture (*care, maintenance and growth of ornamental plantings*)
- > Landscape construction (*building and maintaining gardens and landscapes*)
- > Nursery production (*growing plants for sale*)
- > Sustainable horticultural practice



Animal Health & Veterinary Nursing

Animal Care > Rural Animal Technology >
Veterinary Nursing

Where The Hub

When All day, Monday

Veterinary or animal-related industries work to promote the health and welfare of animals, such as household pets and livestock. This may include administering medication and nursing sick animals, providing proactive and preventive health care, first aid/emergency treatment, animal breeding or working in a veterinary clinic, zoo or farm setting.

Certificate Diploma Degree Graduate Diploma

Postgraduate

Business & Tourism

Accounting > Business Administration >
Business Pathways > Travel and Tourism >
Applied Management > Sales and Marketing >
Tourism Management > Event Management >
Human Resource Management > Strategic Management

EXPO

Where D101, D Block

When 10.00am – 12.00pm, Monday

BUSINESS

The opportunities for our business management graduates are extremely varied. You may oversee the recruitment and retention of staff, devise methods to improve productivity and efficiency, manage stock, create new products and develop marketing strategies. You could eventually work your way up to senior management level or operate your own business.

TOURISM

There are many opportunities for skilled graduates in the tourism industry, and students graduate with a high level of customer service skills and sales ability. Our specialty areas include travel, tour guiding, hospitality operations, conference and events, adventure tourism, sustainability, marketing and destination knowledge. You also have the opportunity to work in the tourism area of your choice.



Certificate Diploma Degree Graduate Diploma

Information Technology

Where Room D207, D Block

When 11.00am – 12.00pm, 1.00pm – 2.00pm, Monday

The ever-changing world of IT is a widely varied field where you can use technology to make a difference. With a broad foundation of knowledge to help you keep up with cutting-edge future developments, you can focus on coding, hardware systems, games development, web development, servers, networking and operations, artificial intelligence, data science, virtual reality... the possibilities are endless.

With programmes at several levels, you don't need any prior coding knowledge to study IT. Come and join our highly experienced teaching staff and get hands-on experience building applications and industry projects so you can use your technical skills to make a better world.



Food Design

Cookery > Culinary Arts > Food and Beverage Services > Hospitality Management

Where Manaaki, Harbour Terrace

When 12.00pm – 1.00pm, Monday

The hospitality industry offers excellent career opportunities here and overseas for those who enjoy working with others and providing competent, friendly service.

You can have a rewarding and successful career in many areas including cafés and restaurants, hotels, hospitals and catering companies.

Culinary Arts

There are numerous opportunities for skilled graduates including restaurants and hotels, artisan businesses, management, media and technology, and tertiary teaching.

Our world-leading culinary arts qualification is the only one of its kind in the Southern Hemisphere and explores the concepts of multi-sensory cooking. Cutting edge culinary arts and creative design are brought together so you have the chance to create customised food experiences to delight and inspire.



Architectural Studies

Architectural Technologies > Interior Architecture

TOURS AND PRESENTATIONS

When 9.30am, 10.30am and 2.00pm, Monday

Where O Block, Room O111

Tours through the facilities will be offered after the information session.

The building industry is facing a number of unprecedented challenges that need to be addressed competently and creatively. Become part of the architecture industry and design New Zealand's built environment. Studies in Architectural Technologies or Interior Architecture will foster your talent to design and your ability to communicate ideas with confidence in a variety of media. You will gain applied technical knowledge required to succeed in this growing industry. You will become confident in architecture history and theory and competent in constructing sustainable, inspiring environments.

Dunedin School of Art

TOURS

Where DSA main entrance, P Block, Riego Street

When 10.00am, 11.30am and 3.00pm, Monday

ART PRESENTATION

Showcase of exciting student work and discussion around career options.

Where DSA, Room 152, P Block, Riego Street

When 12.00pm – 1.00pm, Monday

Artists enhance our understanding of the world using objects and situations that are new, interesting and challenging.

We believe that art education is about creating artists who contribute to many fields of visual culture, and creative flair is valued in a wide range of professions. You can design your own pathways within the eight disciplines we offer: Ceramics, Electronic Arts, Jewellery and Metalsmithing, Painting, Photography, Print, Sculpture, and Textiles.

Additional Art History and Drawing components support your ability to develop ideas and projects. Exceptional studio facilities, practising artists as lecturers and opportunities for work placements make the Dunedin School of Art a preferred choice.

Digital Media & Photography

Digital Media and Design > Digital Photography
> Video Production

Where DSA, Room 152, P Block, Riego Street

When 1.30pm – 2.30pm, Monday

Photographic Media Arts offers innovative programmes in photography and video production. These hands-on, practical and comprehensive programmes cover all aspects of photography and video production for industries that increasingly require professionals to work across still and moving images.

The programmes blend technical and soft skills, helping you to become proficient in a range of photographic, professional and business practices, and will provide you with the knowledge and skills required for any career in professional photography, moving image and related fields.

Design

Communication > Fashion > Product

TOURS AND PRESENTATIONS

When 9.30am, 10.30am and 2.00pm, Monday

Communication

Where Level 5, H Block

Fashion

Where Level 4, H Block

Product

Where Level 3, H Block

New Zealand's future is being designed by people like you! Designers are creative thinkers who want to challenge the status quo.

With your Otago Polytechnic design qualification in communication, fashion or product design you will gain the skills, training and experience to work in a range of rewarding creative fields.

Our programmes are taught by highly qualified and award winning tertiary teachers with extensive industry and professional experience.

You will:

- > Learn in a highly supportive studio environment that caters for you as an individual and allows you to develop confidence as a designer.
- > Consider different perspectives and tackle important social issues
- > Work with clients and customers to create innovative designs, products, services and experiences.
- > Be part of successful teams and understand how designers can add value to multi-disciplinary teams.
- > Sharpen your visual, written and verbal presentation skills so you can communicate your new and exciting ideas to the world.

Decide what matters.

Build your degree around it.

Bachelor of Leadership for Change is not a standard degree: it's self directed and action centred.

Channel your:

passion.

anger.

drive.

purpose.

Curious?

www.op.ac.nz/leadershipforchange

Leadership for Change

Where The Hub

When 9.00am – 1.00pm, Monday

Leaders make the world a better place. Create the change you want to see with this cutting-edge, future-focused degree. A New Zealand-first, this qualification is for those with purpose and passion who want to make a difference. This programme is significantly self-directed and project-based.

It develops transferable, 21st century skills and has a strong focus on self-awareness, communication, collaboration and creativity. From the start, you will be working alongside, and within, businesses or organisations in the field in which you wish to effect change.



Construction & Engineering

Automotive > Electrical Engineering > Mechanical Engineering > Civil Engineering > Carpentry
Quantity Surveying / Construction Management

Mechanical Engineering and Automotive Trades

New Zealand Certificate in Mechanical Engineering (Level 3)

Where Room A202, A Block
When 12.30pm – 1.00pm, Monday

Designed to give you the basic engineering skills in fabrication, welding and machining. This programme will provide you with the skills and work experience necessary to obtain an apprenticeship in one of the mechanical engineering trades. Completion of this certificate will credit your year one study once you take up an apprenticeship.

New Zealand Certificate in Automotive Engineering (Level 3)

Where Room A201, A Block
When 12.00pm – 12.30pm, Monday

Employment in the automotive industry involves repairing, maintaining, modifying and selling vehicles and vehicle parts. You may choose to specialise in working with one type of vehicle, product or service.

Electrical Engineering and Trades

Where Room A114, A Block
When 11.00am – 12.00pm, Monday

Electrical engineers design and supervise the installation and ongoing maintenance of electrical systems, machinery, electrical distribution networks, control systems and building services. Our programmes will ideally place you to enter this rewarding and in-demand career.

Certificate: Electricians install, maintain and repair electrical wiring and electric or electronic equipment. You may study and interpret wiring diagrams, install and maintain electrical cables, service electrical machines and test electrical work for safety. The New Zealand Certificate in Electrical Engineering Theory (Level 3) is a pre-trade qualification to prepare you for this career.

Quantity Surveying/ Construction Management

Where Room L105, L Block, Anzac Avenue
When 11.30am – 12.00pm, Monday

These careers concentrate on getting buildings constructed on time, up to standard and on budget. Both bring challenges and satisfaction with each project.

Quantity surveyors are the costing and financial experts in the construction industry. Construction managers control the construction process making sure the right people, materials and equipment are available at the right times so projects can be completed to the required standards.

Carpentry

Where Room L114, L Block, Anzac Avenue
When 11.00am – 11.30am, 1.00pm – 1.30pm, Monday

Carpenters may build anything from new homes through to sports stadiums. Because this industry is so diverse, a large selection of job opportunities exist in related building areas.

Enjoy the hands-on training in our workshops and the opportunity to be involved in real-world, community-based projects.

Certificate

Diploma

Degree

Civil Engineering

Where Room L146, L Block, Anzac Avenue

When 12.00pm – 12.30pm, Monday

Civil engineering graduates are important participants in the design, construction and project management of civil works such as roads, dams, earthquake engineering, tunnelling, water and sewerage systems, and mining operations. Be responsible for the project management of these jobs, which may include efficiently managing the manpower, machinery, materials, money and environment.

Mechanical Engineering

Where Room L105, L Block, Anzac Avenue

When 1.00pm – 1.30pm, Monday

Mechanical engineers are multi skilled problem solvers and project managers that work primarily in the fields of mechatronic, fluids, thermodynamics and the design of anything with moving parts from mechanical pencils to space stations.

Bridging option:

Bridging certificate to New Zealand Diploma in Engineering

Designed to enable students to access New Zealand Diplomas in Engineering (Mechanical, Civil, and Electrical), the emphasis is on mathematics and science for those who do not yet meet the entry criteria. Only covered at this session (not at the Foundation Learning session.)

Please email ecldadmin@op.ac.nz for more information.





Health Bridging option:

New Zealand Certificate in Study and Career Preparation (Level 3)

New Zealand Certificate in Study and Career Preparation (Level 4)

If your goal is to enter one of our programmes in the health and community area, but you think you might not meet our entry requirements, our health bridging option will prepare you for the challenges of more advanced study.

Please attend any of the Nursing, Midwifery, Occupational Therapy or Human and Community Services seminars to get more information. This qualification can also lead to the Bachelor of Applied Science (Sport, Exercise and Health).

Diploma

Degree

Nursing

Where Room G106, G Block

When 10.00am – 11.00am and 12.00pm – 1.00pm, Monday

Nursing is one of the fundamental professions in health care throughout the world. It is a rewarding career that makes a difference in people's lives. With access to state-of-the-art facilities and the latest industry knowledge, you will gain the experience and confidence to enter the health care profession.

Degree

Postgraduate

Occupational Therapy

Where Room G106, G Block

When 11.00am – 12.00pm

Where Room G201/203, G Block

When 1.00pm – 2.00pm

Work as an occupational therapist to promote health and wellbeing and to help people become involved in everyday activities and lead meaningful and satisfying lives. You may work in schools with children with disabilities, in rehabilitation settings or in hospitals to enable older patients to return to a safe home environment. Other career opportunities include working with people who have head injuries or mental health issues, and adapting workplace environments for clients.

Degree Postgraduate

Midwifery

Where Room H603, H Block
When 11.00am – 12.00pm, Monday

Midwives provide maternity care to both women and their babies from early pregnancy through to six weeks postnatal. Midwives are responsible for care in uncomplicated pregnancy and childbirth, and collaborate with medical and midwifery colleagues if complications arise.

Certificate Degree Graduate Diploma

Bachelor of Social Services

Human & Community Services

Counselling, Career Practice, Disability Support, Mental Health Support

Where The Hub
When 1.00pm – 2.00pm, Monday

Social services help people to improve their quality of life. There are career opportunities in the fields of counselling, disability or mental health support work and career practice. Your work may include offering support and guidance to clients, planning activities, running educational workshops or directly assisting families, groups and organisations.

Certificate

Early Childhood

Where The Hub
When 1.00pm – 2.00pm, Monday

Working with children is a rewarding, challenging, fun and diverse career. This introductory programme helps you gain the core skills and knowledge to prepare you to undertake the higher level learning required for employment in the early childhood sector.



Certificate Diploma Degree Postgraduate

Sport, Exercise & Health

Applied Science > Personal Training >
Sport Management and Coaching >
Health and Wellbeing

Where Room Z114, Sargood Centre

When 10.30am–11.30am, 2.00pm–3.00pm, Monday

The sport, exercise and health industries offer excellent career opportunities for those who like helping and bringing out the best in those around them.

Our graduates may work in all areas of the sport, exercise and health sectors. This can range from – managing sports events, to leading group fitness sessions, working in schools, events, gyms, facilities, clubs, professional sports teams, regional organisations, national organisations, and the private sector.

You could plan fitness and training programmes, encourage people into healthier lifestyles, support professional athletes or manage events.



Diploma Degree

Massage Therapy

Where The Hub

When 11.30am–1.00pm, Monday

Massage therapy is a diverse area which includes wellness and relaxation massage, stress management, sports massage and therapeutic massage.

All the different forms of massage involve the study of anatomy and physiology and the development of specific techniques to target particular areas of the body. Sports and therapeutic massage therapists help clients recover from pain, rehabilitate from injury or improve sporting performance.

Join us for a free relaxing chair massage!

Certificate Diploma

Beauty Therapy

Where The Hub
When All day, Monday

INFORMATION SESSION

Where Beauty Therapy suite, G110, G Block
When 1.00pm – 2.00pm, Monday

Beauty Therapy roles are varied, creative and in demand. Employers are seeking trained, competent therapists with ability to walk into their new career.

Our top quality facilities and programmes are recognised as some of the best in industry and students engage in authentic work experiences.

The exciting New Zealand Beauty Therapy qualifications are world class and these can be complemented by optional external international qualifications from ITEC.

Join us throughout the day for a skin analysis!



Certificate

Hairdressing

Where The Hub
When All day, Monday

INFORMATION SESSION

Where Salon, G103a, G Block
When 1.00pm – 2.00pm, Monday

The hairdressing industry is exciting and ever-changing. Hairdressing skills are highly transferable which gives you access to lots of employment opportunities.

Our hairdressing programmes have strong alignment and links with the industry. The connections that our tutors have with local businesses and their involvement in the industry results in high rates of our graduates gaining successful apprenticeships and these ties with industry also ensure that you are given current information about technologies and trends in hairdressing.

Join us for a free quick hair makeover – including braiding, straightening and curling!



Certificate | Diploma

Central Campus

Farming > Sports Turf Management > Brewing
Cookery > Snowsports > Avalanche Safety
Horticulture > Stonemasonry > Outdoor
Adventure > Bicycle Mechanics > Apiculture >

Where The Hub

When All day, Monday

If you're looking for a study destination with a difference then Otago Polytechnic's Central Campus in Cromwell is a fantastic option!

At Central we offer unique qualifications in a spectacular location. Choose from Horticulture and Stonemasonry, Sports Turf Management and Snowsports, or Brewing and Cookery to name a few.

Whatever you choose to study we can guarantee you will have a student experience like no other!



central.op.ac.nz



MONDAY PROGRAMME TIMETABLE

All day	Study at Central Campus	The Hub
All day	Beauty Therapy	The Hub
All day	Hairdressing	The Hub
All day	Veterinary Nursing	The Hub
All day	Leadership for Change	The Hub
All day	Te Punaka Ōwheo	The Hub
9.30am	Architectural Studies	O111, O Block
9.30am	Product Design	Level 3, H Block
9.30am	Fashion Design	Level 4, H Block
9.30am	Communication Design	Level 5, H Block
10.00am	Business and Tourism	Room D101, D Block
10.00am	Nursing	Room G106, G Block
10.00am	Art Tour	DSA main entrance, P Block, Riego Street
10.30am	Sport, Exercise & Health	Room Z114, Sargood Centre
10.30am	Architectural Studies	O111, O Block
10.30am	Product Design	Level 3, H Block
10.30am	Fashion Design	Level 4, H Block
10.30am	Communication Design	Level 5, H Block
11.00am	Midwifery	Room H603, H Block
11.00am	Carpentry	Room L114, L Block, Anzac Avenue
11.00am	Information Technology	Room D315, D Block
11.00am	Electrical Engineering (Diploma/Degree/Trades)	Room A114, A Block
11.15am	Horticulture, Arboriculture and Landscape Construction	L Block foyer, Anzac Avenue
11.30am	Massage Therapy	The Hub
11.30am	Art Tour	DSA main entrance, P Block, Riego Street

11.30am	Quantity Surveying/ Construction Management	Room L105, L Block, Anzac Avenue
11.00am	Occupational Therapy	Room G106, G Block
12.00pm	Foundation Studies	The Hub
12.00pm	Food Design	Manaaki, Harbour Terrace
12.00pm	Art Presentation	DSA, Room 152, P Block, Riego Street
12.00pm	Nursing	Room G106, G Block
12.00pm	Automotive Engineering (Certificate Level 3)	Room A201, A Block
12.00pm	Civil Engineering (Diploma/Degree)	Room L146, L Block, Anzac Avenue
12.30pm	Mechanical and Automotive Trades (Certificate Level 3)	Room A201, A Block
1.00pm	Beauty Therapy	G110, G Block
1.00pm	Mechanical Engineering (Diploma/Degree)	Room L105, L Block, Anzac Avenue
1.00pm	Information Technology	Room D207, D Block
1.00pm	Hairdressing	G103a, G Block
1.00pm	Human & Community Services	The Hub
1.00pm	Early Childhood	The Hub
1.00pm	English Language	The Hub
1.30pm	Horticulture, Arboriculture and Landscape Construction	L Block foyer, Anzac Avenue
1.30pm	Digital Media & Photography	DSA, Room 152, P Block, Riego Street
1.00pm	Occupational Therapy	Room G201/203, G Block
2.00pm	Architectural Studies	O111, O Block
2.00pm	Product Design	Level 3, H Block
2.00pm	Fashion Design	Level 4, H Block
2.00pm	Communication Design	Level 5, H Block
2.00pm	Sport, Exercise & Health	Room Z114, Sargood Centre
3.00pm	Art Tour	DSA main entrance, P Block, Riego Street