



OTAGO

POLYTECHNIC

Te Kura Matatini ki Otago



AUCKLAND

CENTRAL
OTAGO

DUNEDIN

Study in
New Zealand

International
Programme Guide

Contents

01 Kia ora and welcome **02** Study with us **04** New Zealand **06** **Auckland**
08 Auckland International Campus **10** AIC programme information **14** **Central Otago**
16 Central campus **18** Central programme information **22** **Dunedin** **24** Dunedin campus
26 Dunedin programme information **42** English Language requirements **44** General information
46 Student support **48** Accommodation **52** Frequently asked questions



NZ CULTURE

Māori came to New Zealand from Polynesia in the 13th century and created a new language and culture. They have a tradition for formal occasions called a 'hongi' which is to press noses in greeting.

Kia ora and welcome to Otago Polytechnic

We are a high quality educational institution. Our qualifications are widely recognised, both in New Zealand and around the world – and our programmes prepare you for global career success.



Each year, thousands of students come to beautiful New Zealand for a high quality education in a safe, multicultural environment. New Zealand has a population of 4.6 million people, and is one of the least crowded countries in the world. Here, you can enjoy your studies and experience a fun, friendly and easy going lifestyle.

Each of our **three campuses** offers a different experience.

NZ HISTORY

Dutch explorer Abel Tasman was the first European to sight New Zealand in 1642, but in 1770 English explorer Captain James Cook circumnavigated the country and made the first claim on New Zealand for the English.


OTAGO
POLYTECHNIC
Te Kura Matatini ki Otago

Main Reception
Customer Services
Tari Kaiutu

92%
of graduates
would recommend
their programme

Graduate Destination
Benchmark Report 2017

Employers love our graduates because they are:

- > Work-ready and capable
- > Innovative and motivated
- > Confident and eager to learn
- > Practical and solution-focused
- > Global citizens who care about making a difference

Flexible study options

- > Three campuses (Dunedin, Central Otago and Auckland)
- > A range of delivery methods to suit your learning style
- > Study pathways to match any learner's needs

Real-world experience

- > Practical, applied learning
- > Industry placements, internships and work experience
- > National and international networks and partnerships
- > Extensive training facilities

Study with us

Our graduates achieve great success and personal satisfaction across a diverse range of areas. Studying with us is a great way to shape your future – here are a few reasons why.

Internationally-recognised qualifications

The skills you gain at Otago Polytechnic can take you all over the world. We offer internationally-recognised certificate, diploma and degree programmes in a range of subjects. Achieve a qualification in English, Business, Management, Engineering, Applied Science, or Tourism – among others! You can choose from over 150 programmes.

150+
programmes

94%
overall student
satisfaction

Graduate Destination
Benchmark Report 2017

Student experience

- > Achievement of some of the best student satisfaction results in Australasia
- > Otago Polytechnic Student Association (OPSA) – run by students, for students
- > Vibrant community-based culture
- > Chance to participate in sports, activities, social events and more

96%
of graduates in
work, study
or both

OP Graduate Destination
Survey, 2017

1st
in NZ for
qualification
completions

Tertiary Education
Commission, 2016

24
ways to make
you more
employable

Our Capabilities Framework identifies 24 personal attributes employers value, irrespective of the industry they're in. We'll help you develop them – and give you the transcript to prove it.

Student support

Extensive support services include:

- > Cultural support for students of different ethnicities
- > Student and learning advisors
- > Wellbeing and disability support; chaplain; counselling services; career support
- > Student health centre; childcare centre in Dunedin
- > IT support
- > StudyLink assistance
- > Scholarship opportunities

4.6m

population
with land size
similar to UK

4th

safest country
in the world
Global Peace Index 2016



Our country is known for its stunning natural scenery, from mountains, to lakes and coastlines. New Zealanders (informally known as Kiwis) are down-to-earth and friendly, and our lifestyle is relaxed, with a passion for the outdoors. 'Kiwi ingenuity' helps this small country achieve big things.

With a history of Māori, European, Pacific Island and Asian cultures, New Zealand has become a melting-pot population.

Over three-quarters of the population live in the North Island, with one-third living in Auckland. The other main cities of Hamilton, Wellington, Christchurch and Dunedin are where the majority of the remaining Kiwis dwell.

There are many things to experience here, from wide open spaces, unique nature and wildlife, to adventure tourism and thriving cities.

new

FOR MORE INFORMATION
ABOUT NEW ZEALAND GO TO
WWW.NEWZEALAND.COM

OUR COUNTRY

New Zealand



NZ CULTURE

The **Māori** name for New Zealand is Aotearoa (A-o-te-a-ro-a) which means 'land of the long white cloud'.



OUR LOCATIONS

Auckland

Auckland (known as 'the city of sails') is set on a beautiful gulf, filled with many small islands and was established in 1841 on land offered by the Ngāti Whātua tribe.

It is a major gateway to New Zealand, and a prosperous port. Auckland is our largest city and a third of New Zealand's population live here. It's a fast-growing business hub and where all the action happens.

Immerse yourself in vibrant cafes, nightlife, shopping, museums, galleries and parks. You will love Auckland's warm climate, stunning scenery and multicultural communities. It is the perfect blend of sophisticated city living and outdoor beauty for you to enjoy.





TOP 10
friendliest cities
in the world
Condé Nast Traveler Reader
Choice Awards 2015

5th
most innovative
city in South East
Asia and Oceania
Global Innovation Index 2016

3rd
most liveable
city in the world
Mercer Quality of Living
Survey 2016

NZ HISTORY

The Treaty of Waitangi is New Zealand's founding document, signed on 6 February 1840. The Treaty is an agreement, in Māori and English, that was made between the British Crown and about 540 Māori rangatira (chiefs).





95%
course
completion
2017 AIC Performance
Report

935+
students

91%
student
satisfaction
2017 AIC Performance
Report

What can I study?

- English Language**
- Business**
- Construction**
- Information Technology**



Auckland

Auckland International Campus (AIC) has the big city vibe with a specialist campus that is set up to support you while you live and study away from home.

The campus is located in a modern building in downtown Auckland, on Queen Street, right in the heart of the main shopping and business areas. There are excellent facilities on-campus and off.

Our programmes are delivered by academic and business experts at the forefront of their fields who will teach you skills that lead to exciting careers here, back home, or anywhere in the world. We focus on building learner capability and providing access to work placements with local industry, many of which have led to full-time employment.

Our team come from a range of cultural backgrounds. Classes are taught in English but there are staff available who speak other languages.

“I chose to study in New Zealand because the education system is very advanced here.”

Lorvie Reglos

GRADUATE DIPLOMA IN APPLIED MANAGEMENT

Auckland International Campus

Level 2, 350 Queen Street
PO Box 5268, Auckland
New Zealand 1141

Phone +64 9 309 0301
Email auckland@op.ac.nz
www.op.ac.nz/auckland





For fees and full programme information go to auckland.op.ac.nz

IELTS abbreviations :
 O - Overall, W - Writing, S - Speaking,
 R - Reading, L - Listening

OUR PROGRAMMES

Auckland

At AIC our programmes are tailored to the specific needs of international students. Learn in an environment that supports and celebrates diversity.



English Language

PROGRAMME NAME	INTAKE	DURATION	IELTS
New Zealand Certificate in English Language (Level 4) Learn English from experienced teachers and prepare for further study. These programmes provide an excellent pathway into other academic programmes at Otago Polytechnic.	January, April, June and August	Minimum three weeks to one semester, full-time	O (5.5), no band less than (5.0)
New Zealand Certificate in English Language (Professional/Academic) (Level 5) This will enable you to deal effectively and confidently with most situations in an English-speaking country. These English skills will also provide a basis for you to be able to progress into mainstream academic programmes from the National Qualifications Framework (Level 6 and above).	January, April, June or August	Seventeen weeks full-time (plus two weeks study break)	O (6.0), no band less than (5.5)

Business

PROGRAMME NAME	INTAKE	DURATION	IELTS
<p>Bachelor of Applied Management</p> <p>Develop fundamental management understanding and skills that will allow you to work in a range of management roles. This is a fantastic opportunity to gain a well-respected business degree as this programme has industry experiences at its centre. A Capable NZ option is available for those with relevant work experience. Please refer to op.ac.nz for Majors that are available.</p>	January, March, June, August and October	Three years full-time	O (6.0), no band less than (5.5)
<p>Graduate Diploma in Applied Management</p> <p>Do you want to learn how to make an office run smoothly and efficiently? Then this is the ideal option. If you're someone who has already mastered the basics of business administration, this nationally-recognised qualification will help you step up to a more senior level. If you're new to administration, it will give you an advanced understanding of administration and management skills that will make you a valuable asset to employers.</p>	January, March, June, August and October	One year full-time	O (6.0), no band less than (5.5)
<p>Graduate Diploma in Hotel Management</p> <p>Designed for aspiring individuals seeking to achieve their management potential and to stand out from the crowd. With its blend of practical learning, management theory and strategy, the qualification builds on your existing skills and opens up new career possibilities. This programme is only available to international students studying at AIC.</p>	January, March, June, August and October	One year full-time	O (6.0), no band less than (5.5)
<p>Graduate Diploma in Sales and Marketing</p> <p>Sales and marketing staff are imperative for businesses to grow therefore employment opportunities in this industry are high. Gain the marketing and sales skills required for today's competitive business environment with this Graduate Diploma. Benefit from the guidance and support of highly experienced teachers who will provide you with real-world skills and apply your learning in a practical industry project.</p>	January, March, May, August or October	One year full-time	O (6.0), no band less than (5.5)
<p>Postgraduate Diploma in Applied Management</p> <p>With majors in either Business Management or Business Information Systems, this qualification will enable you to extend and deepen your knowledge and understanding of current management capabilities and issues through experiential learning strategies and reflective practice.</p>	January, March, June, August and October	One year full-time	O (6.5), no band less than (6.0)
<p>Master of Applied Management</p> <p>This qualification offers you three pathway options: Coursework, Professional Project and Coursework, or Research Thesis. Graduates of the programme are critical thinkers, effective problem solvers, future-focused and apply specialised management and leadership knowledge and capabilities to new situations within the field of business management or business information systems.</p>	January, March, June, August and October	Eighteen months full-time	O (6.5), no band less than (6.0)
<p>Master of Professional Practice</p> <p>Are you ready to advance your career through postgraduate education? Are you an experienced professional facing interesting challenges in your workplace? In a liberating approach to education, and a first of its kind in New Zealand, this postgraduate programme supports your ambitions by focusing on your development and work innovation goals. These real-life aims are directly used as the basis for your learning.</p>	January, March, June, August and October	Eighteen months full-time	O (6.5), no band less than (6.0)

Students and graduates of the Auckland International Campus are making a positive difference at Auckland's high-end Spencer on Byron Hotel.

Left to right: industry placement students Rohit Jaggi, Harsh Gogri and Jinyue Wong; graduate, and now Duty Manager Mohit Mavi.



“My work placement has been a very precious experience. I have strengthened my communication and collaboration skills.”

Yi Zhou (Lily) - China

CONSTRUCTION MANAGEMENT AND QUANTITY SURVEYING
INDUSTRY PLACEMENT AT MALTBY'S

Construction

PROGRAMME NAME	INTAKE	DURATION	IELTS
New Zealand Diploma in Construction (Level 6) (Construction Management) or (Quantity Surveying) Want to join a team of construction professionals to see the realisation of commercial or residential construction projects? This new qualification is suitable for candidates from a variety of educational backgrounds including school leavers. It has been developed in consultation with employers and industrial, academic and professional bodies to ensure graduates are highly competent and industry-ready.	March, June, August and October	Two years full-time	O (6.0), no band less than (5.5)
Bachelor of Construction (Quantity Surveying) Qualified construction professionals are in high demand and this qualification will give you what you need to take an active lead role in the changing world of construction.	February	Three years full-time	O (6.0), no band less than (5.5)



IT Student Showcase

At the end of the year, AIC Information Technology students get to showcase their projects in front of industry contacts, potential employers and friends and family.

Information Technology

PROGRAMME NAME	INTAKE	DURATION	IELTS
Graduate Diploma in Information Technology This exciting new programme has been specifically designed for international students. It will provide you with the professional skills that you will need to work effectively in the New Zealand IT and business environment.	January, March, June, August and October	One year full-time	O (6.0), no band less than (5.5)



OUR LOCATIONS

Central Otago

Affectionately called 'Central' by those who know it well, Central Otago is New Zealand's most inland region, located in the southern half of the South Island. It is breathtakingly unique, with vast undulating landscapes, rugged snow-capped mountains, clear blue rivers, deep gorges and tussock-clad hills.



3rd

top 25
destinations –
South Pacific

Trip Advisor Travellers'
Choice Awards 2017

46,000

Central Otago/
Queenstown
Lakes population
NZ Census

Lowest
rainfall of
any region in
New Zealand
NIWA

Central Otago is New Zealand's largest tourism attraction with vineyards, orchards and world-class alpine resorts like Queenstown and Wanaka with activities such as skiing, jet-boating, mountain biking and bungy jumping.

Central Otago has a 'continental' climate, with hot dry summers and cold winters. Spring and autumn are special times in this region. Fruit blossom carpets the orchards in the spring, and the trees turn red, yellow and gold in the autumn. Our campus is located in Cromwell, an historic gold mining town. It offers a student experience like no other.

NZ HISTORY

New Zealander Edmund Hillary made history when he was the first person to reach the summit of Mount Everest, the world's highest mountain, in 1953.

OUR CAMPUSES

Central

This is a boutique campus where you can immerse yourself in lifestyle learning and study some truly unique programmes.

Whether you choose to study with us on or off-campus we have the facilities and educators to make your experience exceptional.

Our programmes in Stonemasonry and Sports Turf Management are the only full-time qualifications of their kind in the country.

We have first-class facilities, including our own plant nursery, vineyard, orchards and restaurant, plus state-of-the-art sports turf and snow sports facilities. The nearby alpine resort of Wanaka is the base for our ski and avalanche safety programmes.

Take advantage of our strong local connections that ensure plenty of work experience is available.

Our campus is creating a sustainable model for others to follow and ensuring our graduates leave us with the tools to become sustainable practitioners in their chosen fields.

“The practical lessons and hands-on learning is what makes studying Sports Turf at the Central Campus so enjoyable.”

Harry Hong

NATIONAL CERTIFICATE IN SPORTS TURF MANAGEMENT (LEVEL 4)*

*Now being replaced by the New Zealand Certificate in Horticulture Services (Sports Turf) (Level 4)





5

unique
countrywide
programmes

200+
students

What can I study?

Applied Management

Automotive Engineering

Avalanche Safety

Bike Mechanics

***Brewing**

Cookery

Farming

Horticulture

Snowsports

Sports Turf

Stonemasonry

Viticulture

*subject to final approval

Central Otago Campus

Corner Erris and Ray St's
PO Box 16, Cromwell
New Zealand 9342

Phone +64 3 445 9900
Email central@op.ac.nz
www.central.op.ac.nz



For fees and full programme information go to central.op.ac.nz

IELTS abbreviations :
O - Overall, W - Writing, S - Speaking,
R - Reading, L - Listening

OUR PROGRAMMES

Central

Our programmes are practical and give you the skills employers want. You will learn in the real world, practising on real projects and in real workplaces.

Applied Management

PROGRAMME NAME	INTAKE	DURATION	IELTS
Graduate Diploma in Applied Management Want to learn more about a specific area of management to complement your existing degree or career aspirations? Gain vital practical experience with a significant industry-based research project (Dunedin delivery) or 200-hour internship (Central Otago or Auckland delivery). Graduate with a solid understanding of the dynamic environment in which managers operate. See op.ac.nz/business for other graduate diploma options.	February and August	One year full-time	O (6.0), no band less than (5.5)

Automotive Engineering

PROGRAMME NAME	INTAKE	DURATION	IELTS
New Zealand Certificate in Automotive Engineering (Level 3) Designed for those who are beginning a career in the auto industry, gain the specific skills you need to work in a range of roles. Spend time in our auto training workshop and graduate as a work-ready individual or choose to engage in one of our Level 4, managed apprenticeship programmes.	February	One year full-time	O (5.0), no band less than (5.0)

Avalanche Safety

PROGRAMME NAME	INTAKE	DURATION	IELTS
New Zealand Certificate in Avalanche Risk Management (Level 5) This course provides the first level of professional training available, enabling participants to work in all sectors of the avalanche industry.	April & July (Wanaka), June (Methven)	Twelve weeks full-time	O (5.5), no band less than (5.0)
New Zealand Certificate in Avalanche Risk Management (Level 6)* Providing the highest level of professional training available in New Zealand, enjoy the chance to be taught by pros and graduate with the ability to assume supervisory roles in all sectors of the industry. The online nature of this programme ensures that you can fit your study around other commitments as we have flexible start dates for the theory courses and applied snow studies. The field training and practical assessment dates are fixed each year (July and September respectively).	July (training) Sept (assessment)	Eighteen weeks (minimum) Online with training/assessment in Wanaka	

*Subject to final approval

Bike Mechanics

PROGRAMME NAME	INTAKE	DURATION	IELTS
New Zealand Certificate in Bicycle Servicing (Level 3) This programme is the only one of its kind in New Zealand and has been specifically designed by Cornerstone Education Limited and the Bicycle Industry Association of NZ (BIANZ) to provide industry-relevant, up-to-date theoretical and practical training. Delivered online with compulsory block courses in Central Otago and 160 hours of work experience.	February and July	Six months full-time	O (5.0), no band less than (5.0)
New Zealand Certificate in Bicycle Mechanics (Level 4) Prepare for employment in the bicycle service industry with this hands-on qualification. This programme has been developed in consultation with industry to provide relevant, up-to-date theoretical and practical knowledge. Delivered online with block courses in Central Otago.	February and August	Six months full-time	O (5.5), no band less than (5.0)



COMING SOON

We are developing New Zealand's first brewing qualifications* with a purpose-built brewing facility at our campus in Cromwell. Designed to meet industry needs as well as offering a learning experience suitable for home brewers who have worked in the industry for a number of years.

Visit central.op.ac.nz/craft-beer-qualifications for more information.

*Subject to final approval

Cookery

PROGRAMME NAME	INTAKE	DURATION	IELTS
New Zealand Certificate in Cookery (Level 3) Learn essential food preparation and cookery techniques and gain valuable commercial and kitchen experience in our training restaurant during this hands-on programme.	February	One day a week for a year	O (5.5), no band less than (5.0)
New Zealand Certificate in Cookery (Level 4) Begin your journey from cook to chef. Involving lots of hands-on, practical cooking in our training kitchens, and a work experience opportunity, this qualification will expand the skills you have developed in a Level 3 cookery programme.	February	One year full-time	O (5.5), no band less than (5.0)
New Zealand Diploma in Cookery (Advanced) (Level 5) (Cookery) This practical qualification includes lots of hands-on cooking in our training kitchens and a work placement in a local business. You will develop a range of cookery, hospitality management, communication, leadership and critical thinking skills, and benefit from the chance to source your ingredients straight from the campus nursery, modern glasshouses and vineyard.	February	One year full-time	O (5.5), no band less than (5.0)

2017 Seafood Challenge

Three cookery students from our Central campus took the 'Paddock to Plate' philosophy to new heights by diving into the beauty and wilderness of World Heritage Area, Dusky Sound, creating a fine dining experience for guests of Pure Salt using nothing but caught and foraged ingredients.



Farming

PROGRAMME NAME	INTAKE	DURATION	IELTS
New Zealand Certificate in Agriculture (Farming Systems) and New Zealand Certificate in Agriculture (Vehicles, Machinery and Infrastructure) (Level 3) Farming careers are fun and rewarding and there is strong demand nationally for passionate people who want to work with livestock in the farming industry. This Central Otago-based qualification is the only farming training programme in New Zealand with a high country flavour.	February and July	One year full-time	O (5.5), no band less than (5.0)

Horticulture

PROGRAMME NAME	INTAKE	DURATION	IELTS
New Zealand Certificate in Primary Industry Skills (Level 2) This programme allows you to improve your English language skills while you learn about the horticulture and/or the New Zealand wine-making industry. You will get hands-on experience working in the industry as you harvest cherries in the summer and grapes in the autumn.	November	Six months full-time	
New Zealand Certificate in Horticulture (Level 3) (Nursery Production) and New Zealand Certificate in Horticulture Production (Level 4) (Fruit Production) Gain the fundamental skills and knowledge required of horticulturists in orchards, vineyards, nurseries or any other major commercial operation with this hands-on programme. Embrace the opportunity to use our campus nursery, hydroponics unit, and our ten-hectare crop production facility, and develop real-world skills and important contacts during your work experience in Central Otago's extensive horticulture industry.	February and July	One year full-time	O (5.5), no band less than (5.0)
New Zealand Diploma in Horticulture Production (Level 5) (Fruit Production)* Progress your career in the national or international horticultural communities by gaining the knowledge and skills to become a competent leader in the stonefruit, pipfruit, berry or wine grape production industries and. All of our teaching centres around sustainable growing principles and you will gain hands-on experience and industry contacts through professional work experience and by using our unrivalled practical facilities. International students must study on campus.	February and July	One year full-time	O (6.0), no band less than (5.5)

Snowsports

PROGRAMME NAME	INTAKE	DURATION	IELTS
New Zealand Certificate in Introductory Snowschool Instruction (Applied) (Level 4) (Ski) or (Snowboard) Undertake ski instructor training or snowboard instructor training and supply the increasing demand for qualified snowsport instructors in a growing adventure tourism industry	June	Eighteen weeks full-time	O (5.5), no band less than (5.0)

Sports Turf

PROGRAMME NAME	INTAKE	DURATION	IELTS
New Zealand Certificate in Horticulture Services (Level 4) (Sports Turf) and New Zealand Certificate in Horticulture Services (Level 5) (Sports Turf)* Become a greenkeeper or groundkeeper by enrolling in New Zealand's only full-time sports turf programme, which incorporates an internship at a top sporting venue in New Zealand or Australia.	February	Three semesters (Level 4), one semester (Level 5) full-time	O (5.5), no band less than (5.0)

Stonemasonry

PROGRAMME NAME	INTAKE	DURATION	IELTS
New Zealand Certificate in Stonemasonry (Level 4) (Construction Stonemasonry) There is a strong demand nationally and internationally for people who can veneer houses in stone and build stone features, and we can help you become a specialist in this field. Through extensive practical training and work experience, this programme will give you the practical skills and knowledge required to work unsupervised as a stonemason.	February	Two years full-time	O (5.5), no band less than (5.0)

*Subject to final approval



OUR LOCATIONS

Dunedin

Set among hills surrounding a harbour, Dunedin is a modern city with gothic architecture, stunning natural beauty and rare wildlife. The city was founded by Scottish settlers in 1848. It was New Zealand's largest urban centre during the gold rushes of the 1860s.

A gold rush in the 1860s brought investment and many Chinese settlers to the region and today Dunedin is a multi-cultural and vibrant city. It's an energetic, innovative urban centre and a safe, welcoming place to study, live and work.

At the front of global trends, Dunedin is New Zealand's incubator for IT, entrepreneurship and fashion. The city's recently regenerated Warehouse Precinct, which once housed sheep's wool for export, is attracting creatives, IT start-ups and small businesses. Every March, Dunedin hosts iD Dunedin Fashion Week – one of New Zealand's most exciting fashion festivals.

Make the most of the great shopping, live music, vibrant art scene, eateries offering food from around the globe, and outdoor pursuits.



84%
of residents
rate quality of
life as 'good'
Average in NZ is 80%
dunedinnz.com

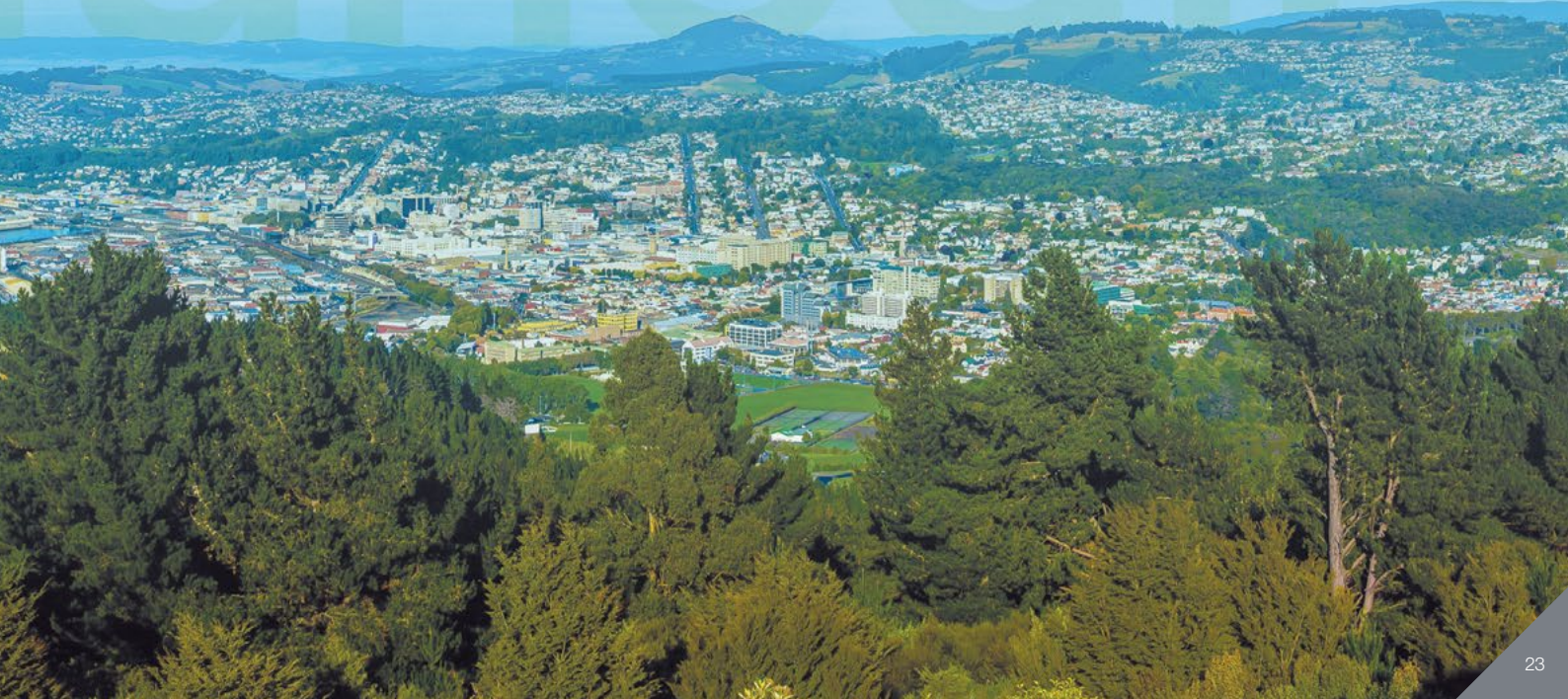
126,000
population
During the academic year
dunedinnz.com

<15
minutes
average
travel time

NZ CULTURE

Dunedin's Sister City is Shanghai, which gifted the city with a Chinese Garden in 1998. We also celebrate Chinese New Year with a dragon parade and other festivities.

Dunedin





OUR CAMPUSES

Dunedin

What can I study?

- Adventure
- Architectural Studies
- Art & Design
- Beauty & Hairdressing
- Business & Tourism
- Construction
- Education
- English Language
- Engineering
- Foundation Learning
- Hospitality & Food Design
- Horticulture
- Information Technology
- Leadership for Change
- Massage Therapy
- Media & Digital Photography
- Midwifery
- Nursing
- Occupational Therapy
- Social Services
- Sport and Exercise
- Sustainable Practice
- Veterinary Nursing

1:16

teacher to
student
ratio

20

NZ teaching
excellence
awards

5,500+

students

If you're looking for a lively campus where something is always happening and a small city that is built around students then our Dunedin campus is for you.

Our Forth Street Campus is within easy walking distance of downtown Dunedin, right in the middle of the student district. Spread out over four city blocks, we have purpose built Art, Sport, Trades, Hospitality and Horticulture facilities and The Hub which provides a space for all students and staff to come together. We have recently finished construction on our own 231-bed accommodation on campus.

Our Cumberland Street Campus is in the heart of the city centre – with our beauty, hairdressing and media training facilities nearby.

"I love Dunedin! I am surrounded by nature and it is very peaceful. Everything is close by and very convenient – and I don't spend hours travelling."

Hongqi (Cissy) Sun

NEW ZEALAND CERTIFICATE IN TOURISM
(LEVEL 4) (OPERATIONS)

Dunedin Campus

Forth Street
Private Bag 1910, Dunedin
New Zealand 9054

Phone +64 3 477 3014
Email info@op.ac.nz
www.op.ac.nz/dunedin



For fees and full programme information go to op.ac.nz/study

IELTS abbreviations :
O - Overall, W - Writing, S - Speaking,
R - Reading, L - Listening

OUR PROGRAMMES

Dunedin

Dunedin is the largest of our campuses but classes are still small, with a focus on hands-on, practical, applied learning.

Foundation Learning

PROGRAMME NAME	INTAKE	DURATION	IELTS
New Zealand Certificate in Foundation Skills (Level 2) – study or work context Get a taste of what tertiary learning is all about and gain essential skills for study and work! This is a great option if you want to re-engage with learning, gain confidence and develop your ability in literacy, numeracy and digital competency. The work context includes practical workshop and community-based experiences.	February and July	Six months full-time	

English Language

PROGRAMME NAME	INTAKE	DURATION	IELTS
English Language Summer School Improve your English over the summer break! This is a great chance for you to improve your Academic English as part of your pathway into further study. Develop your skills in speaking, writing, reading, listening, grammar and academic writing.	October or November	Nine weeks or sixteen weeks	
New Zealand Certificate in English Language (Level 2) This Level 2 programme is ideal if you can already use English in some everyday settings but want to improve so you can study in English.	February and July	Three weeks (minimum) to one semester full-time	We will place you at the right level
New Zealand Certificate in English Language (Level 3) You will learn English from experienced teachers who are very patient and understanding. Successful completion of Level 3 will allow you to enter most of our certificate programmes.	February, July and October	Three weeks (minimum) to one semester full-time	We will place you at the right level
New Zealand Certificate in English Language (Level 4) Learn English from experienced teachers and prepare for further study. This programme provides an excellent pathway into other academic programmes at Otago Polytechnic.	February, July and October	Three weeks (minimum) to one semester full-time	O (5.5), no band less than (5.0)
Tertiary Taster Take a customised course developed for your school, team or organisation. Our experienced, friendly staff help you improve your English speaking, listening, reading and writing skills. Otago Polytechnic has been teaching English to international students for over twenty years. We offer small classes (15-18 students) and design our programmes to meet your needs.	July/August	Two to three weeks full-time	

Bridging option for Health

PROGRAMME NAME	INTAKE	DURATION	IELTS
New Zealand Certificate in Study and Career Preparation (Level 3) and (Level 4) Don't have the academic requirements needed to enter one of our healthcare diplomas or degrees? These certificates offer the perfect solution as it will help you to bridge the gap! Working as a healthcare professional is extremely rewarding as you'll contribute to the wellbeing of your community and have the chance to really make a difference in people's lives. You can study in Dunedin or online with compulsory block courses.	February (Level 3), July (Level 4)	One year full-time	O (5.0), no band less than (5.0)

Nursing

PROGRAMME NAME	INTAKE	DURATION	IELTS
Competency Assessment Programme (CAP) for Overseas Registered Nurses Ideal if you need a Competency Assessment Programme to obtain nursing registration in New Zealand. Gain the specific knowledge required to practice as part of a healthcare team in the New Zealand system.	January, April, July or September	Eight-twelve weeks full-time	
New Zealand Diploma in Enrolled Nursing (Level 5) Enrolled Nurses deliver nursing care and health education across a range of health care settings under the direction of a Registered Nurse. Time spent in our clinical practice facility and on clinical placement will give you vital hands-on experience and allow you to put your theory into practice.	February	Eighteen months full-time	O (6.5), no band less than (6.5)
Bachelor of Nursing Become educated to the highest professional standards through both theoretical and practical learning. On successful completion of the Bachelor of Nursing, you will be eligible to sit the State Final Examination for registration as a Registered Nurse in New Zealand.	February	Three years full-time	O (6.5), no band less than (6.5)

Midwifery

PROGRAMME NAME	INTAKE	DURATION	IELTS
Bachelor of Midwifery This ground-breaking and internationally-renowned qualification leads to registration as a midwife in New Zealand. We have satellite locations around the country and delivery is blended, with weekly face-to-face tutorials in Dunedin and local satellites, midwifery practice experiences, online learning and block courses in Dunedin or Kapiti (Whitireia Kapiti campus).	End of January	Three years full-time	O (7.0), no band less than (7.0)
Postgraduate Certificate in Midwifery Practice This online postgraduate programme is as ideal as it is flexible, practice-focused and relevant. Undertake four courses of seven weeks each that focus on aspects of midwifery practice and critically analyse your own midwifery experiences as a means of adding depth to your knowledge base.	February, April, July or September	Six months full-time	O (6.5), no band less than (6.0)
Postgraduate Diploma in Midwifery Build on the Postgraduate Certificate in Midwifery Practice to extend your midwifery knowledge through a review of current thinking and research. Tailor the courses to enhance your employment potential. Successful completion of this Diploma contributes half the credits required for our Master of Midwifery.	February, April, July and September	One year full-time	O (6.5), no band less than (6.0)

"I chose to study at Otago Polytechnic because it's famous for its education. When I was accepted for the Diploma in Enrolled Nursing it was a new journey and a new life for the whole family."

Grace Cham Ai Ling – Malaysia

NEW ZEALAND DIPLOMA IN ENROLLED NURSING (LEVEL 5)

PROGRAMME NAME	INTAKE	DURATION	IELTS
Master of Midwifery This internationally-recognised programme has a strong research focus and builds on the knowledge and skills gained during the Postgraduate Diploma in Midwifery through the provision of more demanding and intensive study. There are two options for completing this programme. Delivery is online with two compulsory online thesis schools.	February and July	Two years full-time	O (6.5), no band less than (6.0)
Recertification and Registration Competence Programmes We offer the following four online courses, approved by the Midwifery Council of New Zealand, as part of the recertification programme for New Zealand registered midwives and part of the registration competence programme for overseas registered midwives: New Zealand Maternity and Midwifery Systems; Pharmacology and Prescribing for Midwives; Cultural Competence for Midwives; Examination of the Newborn for Midwives.	Any	Flexible	



Occupational Therapy

PROGRAMME NAME	INTAKE	DURATION	IELTS
Bachelor of Occupational Therapy Delivered in Dunedin or Hamilton. There are a number of diverse job opportunities within this health profession. Occupational therapists work in a variety of environments including schools, communities, hospitals, private settings, Primary Health Organisations (PHO), rehabilitation centres, prisons and mines, with people who have had illness, injury, or a disability.	February and July	Three years full-time	O (6.5), no band less than (6.5)
Bachelor of Occupational Therapy (Honours) This is online with compulsory block courses in Dunedin. Enhance your professional practice and increase your employment potential with this postgraduate qualification. Prepare for jobs in research-orientated positions or more responsible roles in occupational therapy practice, both within New Zealand and overseas.	February	One year full-time	O (6.5), no band less than (6.5)
Postgraduate Certificate in Occupational Therapy Practice Delivered online, this programme will help to develop confidence in your ability to articulate your clinical reasoning and increase your knowledge in various aspects of your practice. Become equipped with the academic skills relevant to the 'art' and 'science' of occupational therapy practice and confidently demonstrate intellectual curiosity.	February and July	Six months full-time	O (6.5), no band less than (6.5)
Postgraduate Certificate in Applied Practice in Health (Specialty) This high-level programme is delivered online and has been developed specifically to enable both occupational therapists and non-occupational therapists to complete a postgraduate certificate within the School of Occupational Therapy.	February and July	Six months full-time	O (6.5), no band less than (6.5)
Postgraduate Diploma in Occupational Therapy Practice Delivered online, you can build on the skills gained during the Postgraduate Certificate in Occupational Therapy Practice and gain an advanced level of knowledge in your chosen practice area, thus increasing your career prospects.	February and July	One year full-time	O (6.5), no band less than (6.0)
Master of Occupational Therapy The Master of Occupational Therapy is a qualification of excellence which will provide you with the knowledge and skills that are relevant for international practice. With appropriate experience, you may enter higher positions of responsibility in occupational therapy or become involved in areas of policy or research. This is delivered online with a compulsory block course per year.	February and July (or on a negotiated date)	Two years full-time	O (6.5), no band less than (6.5)



Social Services

PROGRAMME NAME	INTAKE	DURATION	IELTS
<p>New Zealand Certificate in Health and Wellbeing (Social and Community Services) (Level 4)</p> <p>Gain valuable experience during a fieldwork placement and become equipped with the knowledge, skills and values required to work in human services in New Zealand and overseas. This programme includes the following specialty strands in Community Facilitation, Mental Health and Addiction Support, and Social Services. Online delivery available by negotiation.</p>	February	One year full-time	O (5.5)
<p>Bachelor of Social Services</p> <p>Gain a solid foundation in various aspects of the field during year one before choosing to specialise in career practice, counselling, mental health or disability support. You must indicate which specialty area(s) you are most interested in at the time of application but you will not be required to formally choose your specialty until the end of your first year.</p>	February	Three years full-time	O (6.5), no band less than (6.5)
<p>Graduate Diploma in Social Services (Specialty)</p> <p>This one-year programme will enable you to gain a vocational specialty by working with clients and studying professional practice and theory. Upon successful completion, you will graduate with either a Graduate Diploma in Social Services (Career Practice), Graduate Diploma in Social Services (Disability), or a Graduate Diploma in Social Services (Mental Health).</p>	February	One year full-time	O (6.5), no band less than (6.5)

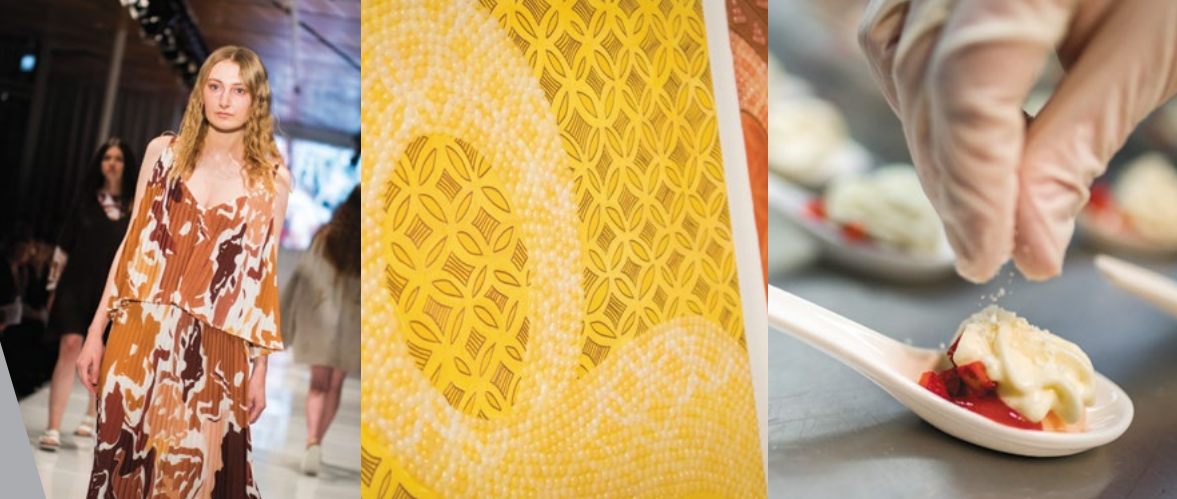
Education

PROGRAMME NAME	INTAKE	DURATION	IELTS
<p>New Zealand Certificate in Early Childhood Education and Care (Level 3)*</p> <p>Gain the core skills and knowledge to prepare you to undertake further higher level learning, required for employment in the early childhood sector. Learners need to be at least 17 years old.</p>	February	Six months full-time	O (5.0), no band less than (5.0)
<p>New Zealand Certificate in Early Childhood Education and Care (Level 4)*</p> <p>Build on the skills and knowledge you developed at Level 3, further preparing you for employment in the early childhood sector. Alternatively, this will act as a pathway into higher level learning, leading to a teaching qualification. Learners need to be at least 17 years old.</p>	July	Six months full-time	O (5.5), no band less than (5.5)
<p>Graduate Diploma in Tertiary Education (Level 7)</p> <p>We offer you a stimulating programme relevant to your teaching context. You will be able to study in a way that suits your schedule and responsibilities and, as a graduate, you will be able to design and facilitate inclusive learning in your tertiary cultural context. Blended delivery: online, distance learning and on-campus activities.</p>	Flexible	One year full-time	O (6.0), no band less than (5.5)

*Subject to final approval

Excite Student Showcase

Every November our students showcase their talents in a range of different events including a fashion show, street food festival, art exhibition and plant sale.



Briding options for Art and Design

PROGRAMME NAME	INTAKE	DURATION	IELTS
New Zealand Certificate in Arts and Design (Level 4)** Do you want to pursue a career where you can express your creativity but are struggling to decide which industry to enter? Perhaps you want to develop a portfolio for entry into one of our highly-regarded degree or diploma Art and Design programmes?	February	Six months full-time	O (5.5), no band less than (5.0)
New Zealand Certificate in Digital Media and Design (Level 4)** Prepare for a career in digital media and design and/or develop a portfolio for entry into one of our highly-regarded degree or diploma Art and Design programmes.	July	Six months full-time	O (5.5), no band less than (5.0)

Art

PROGRAMME NAME	INTAKE	DURATION	IELTS
New Zealand Diploma in Arts and Design (Level 5) New Zealand's only specialised tertiary ceramics qualification, this programme has an emphasis on exploration and experimentation and you will have the chance to develop your own projects. Progress into our Level 6 qualification to further your learning.	February	One year full-time	O (5.5) no band less than (5.0)
New Zealand Diploma in Arts and Design (Level 6)* Continue to explore ceramics and gain leadership and professional practice skills to manage projects/briefs and present your work in a real-world context. Progress into our Bachelor of Visual Arts to broaden your skillset.	February	One year full-time	O (6.0) no band less than (5.5)
Bachelor of Visual Arts This degree will teach you how to become a creative maker, thinker and active agent in a local, national and global context.	February	Three years full-time	O (6.0) no band less than (5.5)
Bachelor of Visual Arts (Honours) Ideal if you are a high achiever who intends to pursue further study, this research-focused programme culminates in an exhibition and writings demonstrating your intellectual rigour and professional expertise.	February and July	One year full-time	O (6.5), no band less than (6.0)
Graduate Diploma in Visual Arts If you already hold a degree and would like to develop your fine arts skills, this programme offers you the chance to carry out an intensive course of study, tailored to suit your individual goals and requirements.	February	One year full-time	O (6.0) no band less than (5.5)
Postgraduate Certificate in Visual Arts If you are seeking initial engagement in postgraduate study this structured programme is for you! Create a body of critically engaged studio work and write a set essay on an aspect of related research methodology.	February and July	Six months full-time	O (6.5), no band less than (6.0)
Postgraduate Diploma in Visual Arts Develop and display mastery of the professional, technical and conceptual skills relevant to your chosen field through an original exhibition and associated writing, leading to a broader range of career options.	February and July	One year full-time	O (6.5), no band less than (6.0)
Master of Visual Arts Gain transferable skills which are highly valued in a huge variety of industries including education, art and design, arts management, editorial and curatorial practices.	March and July	Eighteen months full-time	O (6.5), no band less than (6.0)
Master of Fine Arts Practicing artists will especially benefit from this in-depth research project, which has been benchmarked against national and international standards and culminates in a public exhibition and dissertation.	Flexible	Two years full-time	O (6.5), no band less than (6.0)

*Subject to final approval

Design

PROGRAMME NAME	INTAKE	DURATION	IELTS
New Zealand Certificate in Fashion (Level 4) Embark on this hands-on qualification to acquire the technical skills, knowledge and industry-awareness necessary for further study in the Bachelor of Design (Fashion) or to gain entry-level roles assisting with design, styling, retail/merchandising, and basic garment construction.	July	Six months full-time	O (5.5), no band less than (5.0)
Bachelor of Architectural Studies (Architectural Technology) or (Interior Architecture) Prepare to work as an architectural technologist or for further study if you want to become an Architect or Interior Designer.	February	Three years full-time	O (6.5), no band less than (6.0)
Bachelor of Design (Communication) Learn about key areas of Communication Design including graphic design, photography, advertising and web design, and gain the skills to pursue a career in a rapidly expanding global media environment. A Capable NZ option is available for those with relevant work experience.	February	Three years full-time	O (6.0) W,S (6.0) R,L (5.5)
Bachelor of Design (Product) This is a hands-on, innovative programme. Learn about a human-centred, sustainable approach to the design of products, services and systems for commercial, industrial and community use.	February	Three years full-time	O (6.0) W,S (6.0) R,L (5.5)
Bachelor of Design (Fashion) Become a skilled, industry-ready fashion professional with this internationally-recognised qualification. This leading fashion degree is recognised for its international opportunities, industry connections and the chance to truly develop your individual style and identity as a designer.	February	Three years full-time	O (6.0) W,S (6.0) R,L (5.5)
Bachelor of Culinary Arts The only qualification of its kind in the Southern Hemisphere that will equip you for a career as a chef, artisan food producer, food writer, teacher, entrepreneur, promoter and much more! An option is available for those with relevant work experience through Capable NZ.	February	Three years full-time	O (6.0) W,S (6.0) R,L (5.5)
Graduate Diploma in Design (Specialty) Achieve an applied qualification to complement your degree in a specialist area of design. Ideal if you are a professional designer or practitioner wishing to develop your applied skills and studio project experience.	February and July	One year full-time	O (6.0), no band less than (6.0)
Bachelor of Design (Honours) If you have already achieved excellence in your undergraduate degree, this postgraduate qualification is a great opportunity to extend and deepen your knowledge and understanding of design research methods and professional design practice. Graduates of this programme will be well-prepared for further postgraduate study or employment in a design creative lead role.	February	One year full-time	O (6.5), no band less than (6.0)
Postgraduate Certificate in Design This qualification introduces you to postgraduate study in a guided learning environment. Extend and deepen your knowledge and understanding of design research methods and the professional design environment. Graduates will be well-prepared for further postgraduate study or for employment in a wide range of creative or design management roles.	February	One semester full-time	O (6.5), no band less than (6.0)
Postgraduate Diploma in Design Ideal for graduates who want to extend and deepen their research skills and professional design practices through applied design research projects which are self-generated or developed with industry or community partners. Graduates will be well-prepared for further postgraduate study or for a career in design or design management.	February	One year full-time	O (6.5), no band less than (6.0)
Master of Design Enterprise Want to develop the ability to provide design and design-led strategy expertise within an organisation or enterprise? Engage in industry-based research tailored to suit your particular needs. Blocks of learning on campus in Dunedin, work placement and an industry project.	February	Eighteen months full-time	O (6.5), no band less than (6.0)
Master of Design This qualification of excellence allows you to develop a significant body of scholarly creative work which is presented in a public forum and supported by an exegesis or equivalent. Alternatively, you can complete this programme through a thesis which could form the basis of academic journal articles. Graduates will be well-prepared for doctoral-level study, an academic career or a lead design or design management role.	Anytime	One year full-time	O (6.5), no band less than (6.0)

**The New Zealand Certificate in Arts and Design (Level 4) and New Zealand Certificate in Digital Media and Design (Level 4) have replaced the New Zealand Certificate in Creative Studies. These two programmes act as a creative bridging option into the Bachelor of Visual Arts, Bachelor of Design (Fashion, Product and Communication) and the Bachelor of Architectural Studies.

COMING SOON

Our new film and TV, photography and journalism programmes are currently under development.

Visit op.ac.nz/media for the most up-to-date information.

Media & Photography

PROGRAMME NAME	INTAKE	DURATION	IELTS
New Zealand Certificate in Digital Media and Design (Level 4)[^] Project options in digital photography, digital illustration, web design, moving image, animation and interactivity will allow you to develop real-world skills and a portfolio of work for application to higher level study.	July	Six months full-time	O (5.5), no band less than (5.0)

[^]Successful completion of the New Zealand Certificate in Digital Media and Design (Level 4) and the New Zealand Certificate in Arts and Design (Level 4) (page 31) will prepare you for application to our design/art degrees.



Beauty and Hairdressing

PROGRAMME NAME	INTAKE	DURATION	IELTS
New Zealand Certificate in Study and Career Preparation (Level 3) Gain the academic entry requirements needed for the New Zealand Certificate in Beauty Therapy (Level 4) [*] . During this hands-on programme, you will learn about human biology as well as practical beauty skills. You will get to perform basic skincare and make-up techniques in the beauty classroom.	February and July	Six months full-time	O (5.0), no band less than (5.0)
New Zealand Certificate in Beauty Therapy (Level 4)[*] This programme will allow you to work with real clients and to access our top-quality facilities and products. Upon graduation, you will meet the requirements to become a Registered New Zealand Beauty Therapist or can pursue further study.	February	One year full-time	O (5.5), no band less than (5.5)
New Zealand Certificate in Hairdressing (Salon Support) (Level 3) This Certificate is equivalent to the first year of a hairdressing apprenticeship. Delivered in our hairdressing training salon, you will undertake activities that mimic working in a real salon.	February	One year full-time	O (5.0), no band less than (5.0)
New Zealand Certificate in Hairdressing (Emerging Stylist) (Level 4) You must have completed the New Zealand Certificate in Hairdressing (Salon Support) (Level 3), or an equivalent qualification, before progressing into this qualification. You must also complete a compulsory 90 hour work placement.	February	One year full-time	O (5.5), no band less than (5.5)
Diploma in Beauty Therapies and Epilation (Level 5) This programme takes your skills in beauty therapy to the next level, and advances your skills in skin care and body treatments. Become a senior beauty therapist with greater responsibilities and the option to even manage or own a beauty clinic.	February	One year full-time	O (5.5), no band less than (5.5)

^{*}Subject to final approval

Information Technology

PROGRAMME NAME	INTAKE	DURATION	IELTS
New Zealand Certificate in Computing (Intermediate User) (Level 3) This programme is designed to provide you with the knowledge and skills required to enter the New Zealand Certificate in Information Technology Essentials (Level 4) or other equivalent qualification.	February	One semester full-time	O (5.0), no band less than (5.0)
New Zealand Certificate in Information Technology Essentials (Level 4) Gain an in-depth introduction to computing and software. This qualification gives you the foundation you need to enter the Bachelor of Information Technology or other IT programmes.	February or July	One semester full-time	O (5.5), no band less than (5.0)
Bachelor of Information Technology Develop high-level technical and problem-solving skills and a solid theoretical understanding of IT concepts in this hands-on degree.	February and July	Three years full-time	O (6.0), no band less than (5.5)
Graduate Certificate in Information Technology (Level 7) Increase your specialist IT knowledge in interactive media, hardware, programming, databases, communications, business or networks and operating systems and develop your computing skills. Online learning options can be discussed with the Programme Manager.	February and July	One semester full-time	O (6.0), no band less than (5.5)
Graduate Diploma in Information Technology Are you looking to intensively develop your IT expertise or would like to increase your knowledge in a specialist area? This qualification will take your skills to another level! Online learning options can be discussed with Programme Manager.	February and July	One year full-time	O (6.0), no band less than (5.5)



With advances in technology showing no signs of slowing, SIGNAL has developed four programmes that cover a range of IT development needs.

For specific programme details visit www.signal.ac.nz
 phone 0800 990 024
 email info@signal.ac.nz

Developed in partnership with industry, these programmes will be delivered through a variety of methods including studio-based projects, seminars, industry placements, mentoring and work-based learning. As well as producing highly-competent IT graduates with workrelevant skills, they will provide more effective pathways for graduates from IT education into employment.

Our four keystone programmes are:

SHIFT for graduates from non-IT backgrounds who want to move into an IT-focused career OR for recent graduates who want to enhance their qualification with IT skills to further their employment prospects

ACCELERATE for recent tertiary-level IT grads looking to supercharge their skill set in a work-based learning programme

EDUCATE for school teachers who want to develop their knowledge and skills to teach the fast-growing area of Digital Technologies

XTEND for experienced IT professionals who wish to move into a leadership role or futureproof their business

SIGNAL is a partnership between Otago Polytechnic, the University of Otago, Ara Institute of Canterbury, the University of Canterbury and Lincoln University.

Business

PROGRAMME NAME	INTAKE	DURATION	IELTS
Bridging certificate to business diploma or degree Successful completion of this programme will give you the New Zealand Certificate in Study and Career Preparation (Level 4) and will guarantee you entry into the New Zealand Diploma in Business (Level 5), New Zealand Diploma in Tourism and Travel (Level 5) or the Bachelor of Applied Management.	February and July	One semester full-time	O (5.5), no band less than (5.0)
New Zealand Certificate in Business (Administration and Technology) (Level 3) This nationally-recognised programme is ideal if you are already in, or seeking to move into, a general administrative, data entry, receptionist or customer service role.	February and July	One semester full-time	O (5.0), no band less than (5.0)
New Zealand Certificate in Business (Administration and Technology) (Level 4) If you're someone who has already mastered the basics of business administration, this nationally-recognised qualification will help you step up to a more senior level. If you're new to administration, it will give you an advanced understanding of administration and management skills that will make you a valuable asset to employers.	February and July	One semester full-time	O (5.5), no band less than (5.0)
New Zealand Diploma in Business (Level 5) (Accounting) or (Leadership and Management) Acquire the abilities and knowledge to make you a valued employee who can contribute from day one in an organisation or prepare for higher levels of learning and development. We offer this qualification with strands in Accounting, and Leadership and Management.	February and July	One year full-time	O (5.5), no band less than (5.0)
Bachelor of Applied Management Develop fundamental management understanding and skills that will allow you to work in a range of management roles. This is a fantastic opportunity to gain a well-respected business degree as this programme has industry experiences at its centre. A Capable NZ option is available for those with relevant work experience.	February and July	Three years full-time	O (6.0), no band less than (5.5)
Bachelor of Applied Management (Accounting) – CA and ACA Pathway This qualification has Chartered Accountants Australia and New Zealand (Chartered Accountants ANZ) accreditation and is ideal if you are studying towards becoming a Chartered Accountant or Associated Chartered Accountant. Incorporating case studies, workplace-based or focused assignments, and a major industry project for professional accounting and associated research project, this hands-on qualification has industry experience and connections at its core.	February	Three years full-time	O (6.0), no band less than (5.5)
Graduate Diploma in Applied Management If you already hold a degree and would like to develop your fine arts skills, this programme offers you the chance to carry out an intensive course of study, tailored to suit your individual goals and requirements.	February and July	One year full-time	O (6.0), no band less than (5.5)
Graduate Diploma in Accounting This qualification is useful for people who may be seeking a promotion within their current job or who want to broaden their skill base. With a skillset in accounting you will be in constant demand for your ability to plan and record the financial performance of every kind of commercial venture and could work in a diverse range of organisations. A 200-hour practical industry project will enable you to develop important industry and business connections.	February	One year full-time	O (6.0), no band less than (5.5)
Graduate Diploma in Business Transformation and Change Successful graduates will be able to read the current business climate and think on their feet to create actionable strategies for businesses to increase their profits/commercial sustainability. A 200-hour practical industry project will enable you to develop important industry and business connections.	February	One year full-time	O (6.0), no band less than (5.5)
Graduate Diploma in Event Management Undertake this programme and get all the skills you need to plan, organise, promote and run events, conferences and functions for a variety of organisations, communities, groups and individuals. A 200-hour practical industry project will enable you to develop important industry and business connections.	February	One year full-time	O (6.0), no band less than (5.5)
Graduate Diploma in Human Resource Management For people who may be in management/leadership positions and want to enhance their capabilities in their roles or for those who wish to embark on a career in human resources management.	February	One year full-time	O (6.0), no band less than (5.5)
Graduate Diploma in Sales and Marketing Gain the marketing and sales skills required for today's competitive business environment with this Graduate Diploma. Benefit from the guidance and support of highly experienced teachers who will provide you with real-world skills and apply your learning in a practical industry project.	February	One year full-time	O (6.0), no band less than (5.5)
Graduate Diploma in Strategic Management Learn how to analyse the strategic environment in which businesses operate and how to respond appropriately, and undertake a practical industry project. This qualification could lead to future employment as a manager, director or organisational leader across government departments, NGO's or private sector companies.	February	One year full-time	O (6.0), no band less than (5.5)

*Subject to final approval



Tourism

PROGRAMME NAME	INTAKE	DURATION	IELTS
Bridging Certificate to Tourism This bridging certificate will give you a New Zealand Certificate in Study and Career Preparation (Level 3) and ensure you gain the necessary requirements to enter our level 4 qualification.	February	One semester full-time	O (5.0), no band less than (5.0)
New Zealand Certificate in Tourism (Level 4) (Operations) This exciting, hands-on Certificate will give you the skills to provide a quality visitor experience through your in-depth knowledge of New Zealand tourism destinations. Take part in a series of local industry visits, organise a trade show and go on a field trip to Queenstown - the world-renowned, adventure capital of New Zealand.	February and July	One semester full-time	O (5.5), no band less than (5.0)
New Zealand Diploma in Tourism and Travel (Level 5) Learn how to effectively implement processes that actively support and enhance the visitor experience and evaluate local, national and international tourism operating environments. A fieldtrip to a tourist region, guest speakers and local tourism enterprise visits will help to build knowledge and connect theory and practice.	February, April, July and September	One year full-time	O (5.5), no band less than (5.0)
Graduate Diploma in Tourism Management During this programme, you will learn about tourism operations and enterprises, and complete a practical research project in a tourism organisation, enabling you to forge important relationships with potential employers in the industry.	February	One year full-time	O (6.0), no band less than (5.5)

“With passionate lecturers and small class sizes you get a lot of personal attention. The lecturers really care about you and are very well prepared and helpful. They help us grow a lot.”

Suzanne Sun – China

GRADUATE DIPLOMA IN TOURISM MANAGEMENT



Hospitality and Food Design

PROGRAMME NAME	INTAKE	DURATION	IELTS
New Zealand Certificate in Cookery (Level 3) Learn essential food preparation and cookery techniques and gain valuable commercial and kitchen experience in our training restaurant during this hands-on programme.	February and July	One semester full-time	O (5.5), no band less than (5.0)
New Zealand Certificate in Food and Beverage Service (Level 3) (Café Services) (Bar Services) Gain the essential skills needed for working in the bar and café sector of the hospitality industry. Our on-site cafe and restaurant training facilities will enable you to gain important hands-on experience which you can then put into practice during an industry work experience placement.	February and July	One semester full-time	O (5.5), no band less than (5.0)
New Zealand Certificate in Cookery (Level 4) Begin your journey from cook to chef in this programme available at both Dunedin and Central Otago campuses. Involving lots of hands-on, practical cooking in our training kitchens, and a work experience opportunity, this qualification will expand the skills you have developed in a Level 3 cookery programme.	February	One year full-time	O (5.5), no band less than (5.0)
New Zealand Certificate in Food and Beverage Service (Level 4) (Restaurant Services) Take your food and beverage skills to the next level. Grow your industry knowledge and expertise and gain practical experience through our training restaurant and work placements.	July	One semester full-time	O (5.5), no band less than (5.0)
New Zealand Diploma in Hospitality Management (Level 5) This programme will enable you to gain the skills and attributes you need to tackle junior/trainee, supervisor or team leader roles across a range of hospitality sectors such as restaurants, bars, cafés, accommodation/hotels or catering.	February	One year full-time	O (5.5), no band less than (5.0)
Bachelor of Culinary Arts The only qualification of its kind in the Southern Hemisphere that will equip you for a career as a chef, artisan food producer, food writer, teacher, entrepreneur, promoter and much more! An option is available for those with relevant work experience through Capable NZ.	February	Three years full-time	O (6.0), W,S (6.0) R,L (5.5)



Horticulture

PROGRAMME NAME	INTAKE	DURATION	IELTS
General and Amenity Horticulture programme This qualification will give you the work-ready skills needed to do just this in a range of sectors. Field trips and work experience are a key part of this programme. Graduates will receive both the New Zealand Certificate in Horticulture (General) (Level 3) and New Zealand Certificate in Horticulture (Level 3) (Amenity).	February	One year full-time	O (5.0), no band less than (5.0)
Landscape Construction and Amenity Horticulture programme This programme will give you the work-ready skills you need to enter the horticulture industry, focusing on the amenity and landscaping sectors. Field trips and work experience are integral to this programme. Graduates will achieve both the New Zealand Certificate in Horticulture (Level 3) (Amenity) and the New Zealand Certificate in Horticulture (Level 3) (Landscape Construction).	February	One year full-time	O (5.0), no band less than (5.0)
Arboriculture programme Arborists are in demand for their ability to care for, and maintain, trees. This industry-standard qualification provides learners with the knowledge and skills to carry out tree maintenance and management activities at heights including tree removal. Graduates of this programme will receive both the New Zealand Certificate in Horticulture (Level 3) (Arboriculture) and New Zealand Certificate in Horticulture Services (Level 4) (Arboriculture).	February	One year full-time	O (5.5), no band less than (5.0)



Sport and Exercise

PROGRAMME NAME	INTAKE	DURATION	IELTS
New Zealand Certificate in Sport, Recreation and Exercise (Multi-Sector) (Level 4) Gain the skills needed for entry-level roles in the sport, recreation or exercise industries. Alternatively, successful completion of this Certificate will provide you with the entry requirements for our Bachelor of Applied Science degree.	February	One year full-time	O (5.5), no band less than (5.0)
New Zealand Diploma in Wellness and Relaxation Massage (Level 5) This qualification will help you develop the skills and understanding needed to provide massage and support clients to improve their wellness.	February	One year full-time	O (6.0), no band less than (5.5)
Bachelor of Applied Science (Personal Training; Sport and Exercise; Health (Physical and Nutrition)) Keen on a career in sport science, health and wellness? This qualification will take you there, or you can use it as a springboard into postgraduate study.	February	Three years full-time	O (6.0), no band less than (5.5)
Postgraduate Certificate in Applied Science This qualification will help you extend your knowledge and understanding of the underpinning base theories and procedures that are relevant to the practice environment. This programme has specialties in Performance Analysis, Physical Conditioning or Exercise and Health.	February	Six months full-time	O (6.5), no band less than (6.0)
Postgraduate Diploma in Applied Science The qualification will help you extend and deepen your knowledge of the underpinning base theories and procedures used in the practice environment, in a wider and more encompassing scope than a postgraduate certificate. This programme has specialties in Performance Analysis, Physical Conditioning or Exercise and Health.	February	One year full-time	O (6.5), no band less than (6.0)
Master of Applied Science Master theoretical and procedural subject matter through a body of scholarly applied work — and prepare for an academic career or a lead sport or exercise management role. This programme has specialties in Performance Analysis, Physical Conditioning or Exercise and Health.	February	Eighteen months full-time	O (6.5), no band less than (6.0)

COMING SOON

Embrace the chance to work with some of the most qualified instructors in New Zealand within the spectacular and world-renowned adventure playground of Otago! We are currently developing some new programmes.

Visit op.ac.nz/adventure for the most up-to-date information.



Veterinary Nursing and Animal Health

PROGRAMME NAME	INTAKE	DURATION	IELTS
<p>New Zealand Certificate in Animal Technology (Level 5) (Veterinary Nursing Assistant)</p> <p>This qualification will give you the skills required for a successful career in companion animal healthcare. It will enable you to become a Veterinary Nursing Assistant, the first step to becoming a Veterinary Nurse. In addition, it will also enable you to then enter the New Zealand Diploma in Veterinary Nursing (Level 6) where you will gain the skills to become a Registered Nurse.</p>	February	One year full-time	O (6.0), W,S (6.0) R,L (5.5)
<p>New Zealand Diploma in Veterinary Nursing (Level 6)</p> <p>Gain the advanced skills to make sound, independent decisions about veterinary nursing for animal patients and become adept at supporting their owners. Employment opportunities are diverse and could include working as a veterinary nurse (which may potentially progress to a head veterinary nurse or a practice manager role) or within animal control, wildlife management, animal breeding, conservation or education with additional training.</p>	February	One year full-time	O (5.5), no band less than (5.0)



Construction

PROGRAMME NAME	INTAKE	DURATION	IELTS
<p>New Zealand Diploma in Construction (Level 6) (Construction Management) or (Quantity Surveying)</p> <p>This new qualification is suitable for candidates from a variety of educational backgrounds including school leavers. It has been developed in consultation with employers and industrial, academic and professional bodies to ensure graduates are highly competent and industry-ready.</p>	February and July	Two years full-time	O (6.0), no band less than (5.5)
<p>Bachelor of Construction (Quantity Surveying)</p> <p>Qualified construction professionals are in high demand and this qualification will give you what you need to take an active lead role in the changing world of construction.</p>	February	Three years full-time	O (6.0), no band less than (5.5)
<p>Bachelor of Architectural Studies (Architectural Technology) or (Interior Architecture)</p> <p>Prepare to work as an architectural technologist or for further study if you want to become an Architect or Interior Designer.</p>	February	Three years full-time	O (6.5), no band less than (6.0)

“Here you don’t need to rote learn formulas. Here, you can use your mind for solving problems, you can be more creative.”

Majid Dousti – Iran

NZ DIPLOMA IN ENGINEERING (ELECTRICAL) AND BACHELOR OF ENGINEERING TECHNOLOGY



Engineering

PROGRAMME NAME	INTAKE	DURATION	IELTS
Bridging certificate to New Zealand Diploma in Engineering Successful completion of this programme will give you a New Zealand Certificate in Study and Career Preparation (Level 3) and enable entry into our New Zealand Diploma in Engineering (Civil, Mechanical or Electrical).	July	One semester full-time	O (5.0), no band less than (5.0)
New Zealand Certificate in Electrical Engineering Theory (Level 3) This project-based qualification will provide you with the skills to enter employment in non-registration areas of this industry such as electrical security, appliance servicing and automation. If you want to become an electrician, this is the ideal pre-apprentice preparation.	February	One year full-time	O (5.5), no band less than (5.5)
New Zealand Certificate in Mechanical Engineering (Level 3) This hands-on qualification is designed for people already working in the mechanical engineering, construction, manufacturing and fabrication industries — or for people who would like to complete a pre-trade qualification before entering these industries.	February	One year full-time	O (5.5), no band less than (5.0)
New Zealand Certificate in Automotive Engineering (Level 3) Learn how to service general automotive systems. This qualification is designed for people who are beginning a career in the industry. Available in Dunedin or Central.	February	One year full-time	O (5.5), no band less than (5.0)
New Zealand Diploma in Engineering (Electrical Engineering) Develop a sound knowledge, understanding and practical appreciation of electrical engineering processes and theory, and an ability to apply your learning in a practical and innovative way.	February	Two years full-time	O (6.0), no band less than (5.5)
New Zealand Diploma in Engineering (Mechanical Engineering) This programme will provide you with the knowledge and understanding of mechanical engineering processes and theory.	February	Two years full-time	O (6.0), no band less than (5.5)
New Zealand Diploma in Engineering (Civil Engineering) Develop a sound knowledge, understanding and practical appreciation of civil engineering processes and theory, and an ability to apply your learning in a practical and innovative way.	February	Two years full-time	O (6.0), no band less than (5.5)
Bachelor of Engineering Technology Learn engineering theory and the applied and practical skills required to work in a wide range of industries, and gain a deep understanding of your area of specialisation through an industry-based project. Mechanical, Civil and Electrical specialties available.	February	Three years full-time	O (6.0) W,S (6.0) R,L (5.5)



www.capablenz.co.nz
 phone 03 477 3014
 email info@capablenz.co.nz

Gain a nationally-recognised qualification without going back to the classroom.

Our world-leading assessment methods value the prior learning of individuals who want to become qualified, and support the workplaces that employ them. We measure your existing capability, gained through years of work and life experience, against a formal qualification and give academic credit for what you already know. Most programmes available at Otago Polytechnic can be assessed through Capable NZ. Below is our range of Professional Practice qualifications which can be applied across any study area.

PROGRAMME NAME	INTAKE	DURATION	IELTS
Graduate Diploma in Sustainable Practice Gain the knowledge to promote and implement sustainable leadership in your community and workplace. Examine the social, economic, political and environmental implications of sustainability. Compulsory block courses are a requirement. Blended delivery through Capable NZ.	February, May or July	One year full-time	O (6.0), no band less than (5.5)
Graduate Diploma in Professional Practice Are you ready to advance your career through a graduate qualification? This qualification allows you to identify a challenge or goal in your work environment. You can then research and define this issue, develop an approach for resolving it, and implement processes to achieve your desired outcomes.	Flexible	One year full-time	O (6.0), no band less than (5.5)
Graduate Diploma in Professional Practice (Occupational Health and Safety) If you have sound experience but no academic qualification to back your knowledge, this programme is the means with which to achieve 'Graduate' status within the NZISM accreditation programme.	Flexible	One year full-time	O (6.0), no band less than (5.5)
Master of Professional Practice Are you an experienced professional facing interesting challenges in your workplace? This postgraduate programme supports your ambitions by focusing on your development and work innovation goals. These real-life aims are directly used as the basis for your learning.	Flexible	Eighteen months full-time	O (6.5), no band less than (6.0)
Doctor of Professional Practice Are you an advanced practitioner who is ready to achieve a doctoral qualification while making a significant contribution to their organisation? This programme captures emergent knowledge relevant to the candidate's work and relevant for work contexts, integrating work-based knowledge with disciplinary knowledge to create new knowledge.	Flexible	Three years (up to seven years)	O (6.5), no band less than (6.0)

Leadership for Change

At Otago Polytechnic, we believe that our people make a better world and that's why we've developed a qualification for tomorrow's big thinkers and change makers.

A New Zealand-first, this degree is for learners of any age who are passionate about making a difference to an industry, organisation, community, or even the whole planet. Our innovative, new degree has been designed to meet the needs of people who want to make a difference whilst also developing their career to enable the change they want to lead. It provides an environment for nurturing big ideas, a platform for launching those thinkers and doers that want to create meaningful and positive change!

For full entry requirements, visit op.ac.nz/leadershipforchange

PROGRAMME NAME	INTAKE	DURATION	IELTS
Bachelor of Leadership for Change Are you driven by a desire to create positive change for an industry, community or the planet? Then our innovative degree is ideal for you! A New Zealand-first, this qualification caters for all people, no matter what field you want to make a difference in. Delivered in Dunedin or online.	March	Three years full-time	O (6.0), W,S (6.0) R,L (5.5)



English Language

Improve your English and prepare for further study!

Our English programmes are designed to provide a clear pathway into our other certificate, diploma and degree qualifications.

BENEFITS

- > Nationally-recognised qualifications
- > Experienced teachers
- > Small class sizes
- > A flexible study programme
- > Academic writing and study skills included at Level 4.



“It was a good bridging programme with really supportive staff that taught us about the language and also about New Zealand traditions, culture and festivals.”

Wang Xin – China

NEW ZEALAND CERTIFICATE IN ENGLISH LANGUAGE (LEVEL 3)

EduBits

www.edubits.nz

Micro-credentials let you show what you know.

EduBits is an exciting new learning platform that enables you to be recognised for your professional skills and knowledge without having to complete a formal qualification. Your digital badge is credible proof that you have been assessed for, and achieved, a certain set of skills. Badges are available in a broad range of topics including sustainable business, project management, business skills, education, and more.

Internationally recognised English proficiency outcomes for international students

ENGLISH PROFICIENCY OUTCOMES¹

PROGRAMME LEVEL	IELTS TEST ²	TOEFL PAPER-BASED TEST (PBT)	TOEFL INTER-NET BASED TEST (IBT) ³	CAMBRIDGE ENGLISH EXAMINATIONS	NZCEL ³ A) EXPIRING B) CURRENT	PEARSON TEST OF ENGLISH (ACADEMIC)	CITY & GUILDS IESOL	LANGUAGE CERTIFICATE
Certificate at Level 3	General or Academic score of 5 with no band score lower than 5	Score of 500 (with an essay score of 4 TWE)	Score of 35 (with a writing score of 20)	FCE or FCE for Schools with a score of 154. No less than 154 in each skill OET at Grade C in all subtests	a) Level 3 (General) or (Workplace) b) Level 3 (General)	PToE (Academic) score of 36	B1 Achiever with a score of 43	B1 Achiever IESOL (LRWS) with PASS
Certificate at Level 4	General or Academic score of 5.5 with no band score lower than 5	Score of 530 (with an essay score of 4.5 TWE)	Score of 46 (with a writing score of 20)	FCE or FCE for schools with a score of 162. No less than 154 in each skill OET at Grade C in all subtests	a) Level 3 (General) b) Level 3 (Applied)	PToE (Academic) score of 42	B2 Communicator with a score of 42	B2 Communicator IESOL (LRWS) with PASS
Certificate or Diploma at Level 5	Academic score of 5.5 with no band score lower than 5	Score of 550 (with an essay score of 5 TWE)	Score of 46 (with a writing score of 20)	FCE or FCE for schools with a score of 162. No less than 154 in each skill OET at Grade C in all subtests	a) Level 4 (General) or (Workplace) b) Level 4 (General) or (Employment)	PToE (Academic) score of 42	B2 Communicator with a score of 42	B2 Communicator IESOL (LRWS) with HIGH PASS
Certificate or Diploma at Level 6 Diploma or degree at Level 7 Graduate Certificate or Diploma at Level 7	Academic score of 6 with no band score lower than 5.5	Score of 550 (with an essay score of 5 TWE)	Score of 60 (with a writing score of 20)	FCE, or FCE for schools, or CAE, or CPE with a score of 169. No less than 162 in each skill OET at Grade C in all subtests	a) Level 4 (Academic) b) Level 4 (Academic)	PToE (Academic) score of 50	B2 Communicator with a score of 66	C1 Expert IESOL (LRWS) with PASS
Postgraduate Diploma or Postgraduate Certificate at Level 8 Bachelor Honours Degree at Level 8 Master's Degree at Level 9 Doctoral Degree at Level 10	Academic score of 6.5 with no band score lower than 6	Score of 590 (with an essay score 5.5 TWE)	Score of 79 (with a writing score of 21)	CAE or CPE with a score of 176. No less than 169 in each skill OET at Grade B in all subtests	a) Level 5 (Academic) or (Professional) b) Level 5	PToE (Academic) score of 58	C1 Expert with a score of 42	C1 Expert IESOL (LRWS) with HIGH PASS or C2 Mastery IESOL (LRWS) with PASS

¹The listed outcomes represent the minimum scores or grades for each test or qualification that qualify a student for enrolment at each programme level. Students with higher scores or grades than required for a particular programme level may still enrol at that level. Where the entry requirements for a programme are for a higher English proficiency outcome than is listed in the relevant row of the Table for the programme level in which the student is being enrolled, the student must meet that higher level.

²IELTS scores used must be taken from a single IELTS Test Report Form (i.e. combining scores from more than one test is not permissible).

³New versions of some NZCEL qualifications, and in some cases new qualifications, were published on 13 June 2017. These are intended to replace pre-existing versions and qualifications, which have been given expiring status until discontinued on 31 December 2019.

⁴This note is not part of these Rules but notifies users of an error in the Table of the Appendix pertaining to the writing scores for TOEFL iBT. For more information and the correct writing scores, please see TOEFL writing scores.

General information

Here is some important information you need to know so that you can make an informed decision.

Otago Polytechnic has agreed to observe and be bound by the Education (Pastoral Care of International Students) Code of Practice, 2016 published by New Zealand Qualification Authority (NZQA). For a copy of the code, please visit nzqa.govt.nz

For more detailed information about our entry criteria and your country's equivalent qualifications, please visit op.ac.nz/international/entry-criteria

CANCELLATION OF A PROGRAMME/COURSE

Enrolment in a programme or course is conditional upon, and subject to sufficient numbers of students enrolling in that programme or course. For full terms and conditions please go to op.ac.nz/termsandconditions

FEES

We have not shown any fees in this programme guide, as they are subject to change. For the latest fees for the programme you wish to study go to op.ac.nz/study then the relevant programme information sheet. Please note that additional fees may, from time to time, be required for external examinations, NZQA fees, and/or additional material fees.

ENGLISH REQUIREMENTS

If English is not your first language, you will need to meet the English entry requirements for the programme you want to study. The academic entry IELTS required are shown with each programme.

If you currently do not meet the IELTS requirement for the programme you want to study, we offer the New Zealand Certificate in English Language at various levels.

These programmes have been designed to enable you to improve your English language skills. They also provide a perfect pathway into our qualifications.



NZ CULTURE

New Zealand has a culturally diverse population. At the last Census, 74% of people identified as European, 15% as Maori, 12% as Asian, and 7% as Pacific people.



Student support

Starting life as a new student can be exciting as well as challenging. From the moment you consider studying at Otago Polytechnic, to your arrival on campus, we're here to help you with any questions or concerns.

STUDENT SUCCESS TEAMS

Student Advisors are based at each of our campuses and are available to talk in person, via phone or email anytime. They can help you with any personal problems and study issues as you settle into life at Otago Polytechnic, and offer continued assistance throughout the academic year. They also offer well-being, disability support, counselling, a Chaplain and specialised support for international students.

LEARNING SUPPORT

Help is always at hand if you reach out for it. Online resources and our friendly Student Success teams are available to support you in becoming a successful, independent learner.

CAREER SERVICES

We offer expert guidance and a friendly ear to help you make informed career decisions based on your own personal values, goals and interests. We can discuss career options, a possible course of study, job applications or interviews, or any other career-related topic.

IT SUPPORT

Using technology is a timesaver when you know what you are doing. Being aware of the services and support available will enable you to utilise technology and maximise your study time.



For the latest accommodation information go to studentservices.op.ac.nz/home/student-success/



NZ HISTORY

New Zealand is the birth country of physicist Ernest Rutherford. Rutherford was the first person to split the atom, a significant step in atomic research.



Auckland

APARTMENTS

There are many popular apartments for international students in the city centre that are suitable for both short and long-term accommodation. Here are some excellent options; empire21.co.nz, princeton.net.nz and **Columbia Apartments**


FLATTING

Check out our student Facebook group, called **OPAIC Student Community**. Lots of students post here looking for room mates or accommodation.

HOMESTAYS

Your stay includes all meals and a private, furnished bedroom. The cost is \$300 per week for a maximum stay of 12 weeks. There is also a \$280 placement fee. Please email inhomes@ihug.co.nz for more information or to book this option.

NZ HISTORY



New Zealand women were the first in the world to win the right to vote on 8 September 1893. Kate Sheppard was the leader of the suffrage movement that presented a petition to parliament with 32,000 signatures, the largest ever presented at the time.

Accommodation

We can help you find a suitable place to live, and provide ongoing accommodation assistance and support. Your options will depend on which campus you study at.



For the latest accommodation information go to op.ac.nz/students/support/accommodation

THE DIFFERENT TYPES OF ACCOMMODATION

Supervised accommodation: A private hall of residence with different room options. All meals are included and staff are on hand to provide support.

Shared accommodation (we call it ‘flating’): Many students love the experience of renting a house with friends and other students. You will share living costs such as electricity, telephone and food.

Studio and hostel accommodation: For example a YMCA or YWCA.

Homestay: You will live with a local family in their home, have your own room and all meals are included.



Central

NEW PURPOSE-BUILT COMPLEX

Our brand new, 25-bed accommodation complex at our Central Campus offers students the best in modern living. It features five newly-built, fully-furnished houses, each with five single bedrooms. All of the houses are double glazed and fully insulated.

central.op.ac.nz/students/living-in-central

FLATTING

Unfurnished flats generally cost between \$85-\$115 per week per room with another \$80-\$100 in expenses like power, phone and food. Furnished flats typically cost slightly more. We manage a small amount of rental property within Cromwell, which costs \$125-\$143 per week plus expenses. Contact barbara.emmitt@op.ac.nz if you are interested in this option.

STUDIO AND HOSTEL ACCOMMODATION

The Chalets (thechaletscromwell.co.nz) is an unsupervised hostel where you can rent a single room for \$125 per week, including electricity. Students are usually placed together in one of the chalets, sharing a lounge, bathroom and kitchen facilities.

HOMESTAY ACCOMMODATION

Homestays are limited and cost around \$231-\$242 per week (all meals included), plus a one-off placement fee of \$250.

Dunedin

SUPERVISED ACCOMMODATION

Te Pā Tauira - Otago Polytechnic Student Village
(see right hand page).

Salmond College is an easy 15-minute walk from our Dunedin Campus. It has great facilities for study and recreation and a communal eating area for meals.

salmondcollege.ac.nz

STUDIO AND APARTMENT ACCOMMODATION

Studios are often furnished with access to kitchen facilities. Costs are around \$160-\$280 per week and may include power, heating, local telephone calls and cleaning of the common areas. A self-contained one-bedroom apartment can cost \$200-\$350 per week.

FLATTING

Unfurnished flats generally cost between \$90-\$130 per week/per room and another \$80-\$100 in expenses like power, phone and food. Furnished flats typically cost slightly more.

HOMESTAY

Indicative costs are \$38 per night / \$266 per week (internet not included, 2-3 days of transport, 3 meals a day). There is a one-off placement fee of \$280.



Te Pā Tauira Otago Polytechnic Student Village

Dunedin's on-campus Student Village offers you a comfortable and stylish home-away-from-home.

The 231-bed, furnished residential village features fully-catered single rooms, self-catered studios and four-bedroom apartments. Its prime location means you will enjoy a short walk to class and still be just minutes away from the city centre.

You'll also benefit from:

- > being part of an exciting and supportive community
- > a contemporary and modern living environment
- > a unique residential programme
- > in-house resident advisors
- > a chance to make new friends.

Amenities and advantages include:

- > common rooms, a pool table and sports grounds
- > near to UniPol gym, the Stadium and the Robertson Library
- > catered dormitory
- > wifi
- > secure bike storage
- > edible gardens
- > double-glazed windows and high-level insulation
- > laundry.

mystudentvillage.com/nz/otago-polytechnic-student-village

Frequently asked questions

If you have a question about studying at Otago Polytechnic, don't hesitate to ask us! From student visas to New Zealand residency, we've got an answer for everything.

What do fees include?

Tuition fees vary and do not include travel medical insurance. For more information about fees, visit [op.ac.nz/international/important-information-and-policies/](https://www.op.ac.nz/international/important-information-and-policies/)

Do you charge an application fee?

No.

When should I apply?

We recommend you apply at least three months before your programme starts.

How do I apply?

You can submit your application online. If you have any problems with this, please contact us or download a PDF of the application form at www.op.ac.nz/apply

You can also contact one of our approved agents. Go to [op.ac.nz/international/find-an-agent-near-you/](https://www.op.ac.nz/international/find-an-agent-near-you/)

What are the entry requirements?

Entry to our undergraduate certificates, diplomas and degrees is based on New Zealand secondary school qualifications, or the equivalent 12-13 years of schooling. Entry to our graduate and postgraduate programmes is based on successful study at undergraduate level, usually a bachelor's degree. For more details and information about your country's equivalent academic entry requirements, visit [op.ac.nz/international/entry-criteria](https://www.op.ac.nz/international/entry-criteria)

We assess each application to ensure your likelihood of success.

What do I need to include in my application?

Please include certified copies of your academic results from secondary school, college or university in English. If English is not your first language, you may need English language test results (IELTS, TOEFL, TOIEC or NCEA Level 2 English results).

There may be other requirements, such as a CV or a portfolio, depending on the programme.

Phone **+64 3 477 3014**
Email **auckland@op.ac.nz**
Visit us at **op.ac.nz**

Where can I get information about immigration requirements, including my student visa application?

Visit **immigration.govt.nz** for details about immigration requirements and how to apply for a student visa.

How long will my study take?

Our undergraduate degrees usually take three years. Diplomas usually take two years and certificates one year. Graduate and postgraduate qualifications can take one to two years.

How much can I earn while I am studying?

As a full-time student, you can work up to 20 hours per week. The minimum hourly wage is NZD \$15.75 before tax for employees aged 16 years or over.

Visit **immigration.govt.nz** to learn more.

How long can I study in New Zealand?

If you pass your programme and continue to meet your student visa requirements, you can extend your visa.

Visit **www.immigration.govt.nz** to learn more about student visa requirements and extensions.

What happens when I finish my degree?

You may be able to gain a one year job search visa. For further information on work visas and eligibility for permanent residency, visit **immigration.govt.nz**

What are living costs like in New Zealand?

Your daily cost of living is in addition to our tuition fees. Immigration New Zealand estimates that an international student will require at least NZD\$15,000 per year to cover all living expenses.

For up-to-date information about New Zealand living costs, please visit this website: **newzealandnow.govt.nz/living-in-nz/money-tax/comparable-living-costs**





Auckland International Campus

Level 2, 350 Queen Street
PO Box 5268, Auckland
New Zealand 1141
Phone +64 9 309 0301

Central Otago Campus

Corner Erris & Ray Streets
PO Box 16, Cromwell
New Zealand 9342
Phone +64 3 445 9900

Dunedin Campus

Forth Street
Private Bag 1910, Dunedin
New Zealand 9054
Phone +64 3 477 3014

