



**OTAGO**

**POLYTECHNIC**

Te Kura Matatini ki Otago

# DUNEDIN TERTIARY Open Day 2018

Monday 7 May

Otago Polytechnic



# The Hub

Come and talk to us in The Hub for information and advice!

## Career Expo

Speak to our friendly tutors about your study options and career goals!

## Career guidance

Unsure about your career goals? Drop in any time to see our Careers Team for advice and support!

## FREE bacon butties!

From 8.30am until they run out.



## The Edge

Come and join The Edge from 10am for music, games and prizes!



## Need directions or advice?

Our friendly Student Ambassadors are here to help - they are the ones in the green t-shirts!

0800 762 786  
[www.op.ac.nz](http://www.op.ac.nz)





# Student support services

Starting life as a new tertiary student can be exciting as well as challenging. Our Student Success team is here to help you through any issues that might arise, and make sure your time here is rewarding and fun!

## Student Success team

**studentsuccess@op.ac.nz**

**Where** The Hub

### Student Advisors

Our Student Advisors are available to talk in person, via phone or email anytime. They can help you with any personal problems and study issues as you settle into life at Otago Polytechnic, and offer continued assistance throughout the academic year.

### Disability and Wellbeing Support

Our Disability and Wellness Advisor provides support tailored to your individual needs. This may include classroom note-takers, readers and writers, tutors, equipment, adaptive technology, orientation and liaison with lecturing staff and community agencies.

### Pasifika support

Anna Seiuli provides support and assistance to Pacific Islands students. Those who identify as being of Pacific Islands descent will be contacted by Anna. Regular fono are held during the year to update students on new activities and support opportunities.

### International support

The International Student Advisors are dedicated to assisting international students to settle into tertiary study to ensure that you get personalised support while studying.

### Other support services include:

Learning advice	Counselling services
Student Health Centre	Careers services
Chaplain	IT support

## Te Punaka Ōwheo

The team at Te Punaka Ōwheo assists and supports Māori students studying at Otago Polytechnic. They can also provide information on a range of scholarship opportunities.

Poho is a dedicated space on campus for Māori students. Te Punaka Ōwheo and Poho can be found over by A Block.



**www.opsa.org.nz**

**Where** The Hub

**The Otago Polytechnic Students' Association (OPSA) is an independent organisation run by students for students, and provides a range of services, assistance, facilities and excitement!**

### Services and facilities

OPSA provides access to UNIPOL recreation centre, orientation and social events, Student Job Search, student discounts, your student ID card and much more!

### Representation and help

OPSA offers services like advocacy, representation, grants, financial support and advice. Students can seek confidential assistance from OPSA to help with a range of issues including academic, personal and tenancy concerns.



## Te Pā Tauira Otago Polytechnic Student Village

### Our new, on-campus student village opened this year.

The 231-bed furnished residential village offers fully-catered single rooms (dorms), and self-catered studios and four-bedroom apartments. With its prime location, you will enjoy a short walk to campus whilst still only being minutes from the city centre. Purpose-built for students, it's the perfect home to enjoy student life to the full within an exciting and supportive community.

## Features and amenities include:

### You will benefit from:

- Being part of an exciting and supportive community
- A contemporary and modern living environment
- A unique residential programme
- In-house resident advisors
- A chance to make new friends

### Amenities and advantages include:

- Common rooms, a pool table and sports grounds
- Near to UniPol gym, Forsyth Barr Stadium and the Robertson Library
- Catered dorm
- Wifi
- Secure bike storage
- Edible gardens
- Double-glazed windows and high-level insulation
- Laundry

## Tours

**Come and see what it would be like to live in our Village while you study.**

**Where:** Main building entrance  
(enter from the carpark on Union Street)

**When:** 9.00am-9.45am, 10.30-11.15am,  
11.00am-11.45am, 12.30pm-1.15pm,  
1.30pm-2.15pm

For more information visit:

**www.mystudentvillage.com/nz/  
otago-polytechnic-student-village**

Phone: **0800 677 801** Email: **OPSV@clv.co.nz**

# Explore Otago Polytechnic

At Otago Polytechnic we provide practical, hands-on learning that will prepare you for an exciting career.

We have small class sizes, allowing you to get the most from our award-winning lecturers, and great student support services.

Employers also love our enthusiastic, work-ready graduates so studying with us is the first step towards getting your dream job!



## Qualifications



**Our world-class qualifications are approved by the New Zealand Qualifications Authority.**

Foundation and Bridging Certificates	6 months – 1 year
Certificates	6 months – 1 year
Diplomas	1 – 2 years
Bachelor's Degrees	3 years
Graduate Certificates or Graduate Diplomas	6 months – 1 year
Postgraduate Certificates or Postgraduate Diplomas	6 months – 1 year
Bachelor's Degrees with Honours	1 year
Master's Degrees	1 – 2 years



# Academic seminars

Certificate

## Foundation Studies

**Where** The Hub  
**When** 12.00pm–1.00pm

### New Zealand Certificate in Foundation Skills (Level 2)

Get a taste of what tertiary learning is all about and gain essential skills for study and work!

This programme is great if you want to gain confidence and ability in literacy, numeracy and digital competency. You can study in either a general study or work context. The work context includes practical workshops and community based experiences.

### FarmHand

Love the outdoors and practical work? This 17-week, Dunedin-based scheme is run in partnership with the Malcam Charitable Trust and is a stepping stone into education and employment in the primary sector industry.

You will take part in a work placement, improve your study skills, gain an Otago Polytechnic certificate qualification and learn how to put together a great CV!

### New Zealand Certificate in Study and Career Preparation (Level 3)

Strands include bridging to: Beauty, Hairdressing, Engineering, Health and Work

This programme offers you the chance to improve your study skills and prepare for higher level learning.

It includes either a general study context or a work context. Along with improving your reading, writing, presenting and computer skills, you will also gain valuable employability skills such as CV and interview preparation, and how to write a cover letter. Depending on the course you choose, this programme offers work experience opportunities.

Certificate

## English Language

**Where** The Hub  
**When** 1.00pm–2.00pm

Come and speak to our teaching staff today (For ESOL students, whether International or Permanent Residents, and for domestic students needing to improve their academic skills.).

For English Language, your level will be assessed before placement in one of our Level 2, 3 or 4 programmes, which will then lead you into our mainstream programmes.



Certificate

## Horticulture

Sustainable Horticulture > Arboriculture  
Landscape Construction

### TOURS

**Where** Leaving from the L Block foyer, Anzac Avenue  
**When** 11.15am–11.45am, 1.30pm–2.00pm

Horticulture workers assist in the design, production and maintenance of plants, gardens and landscapes for both local and international markets. The industry is extremely diverse.

As a horticulturalist, you may specialise in a number of areas:

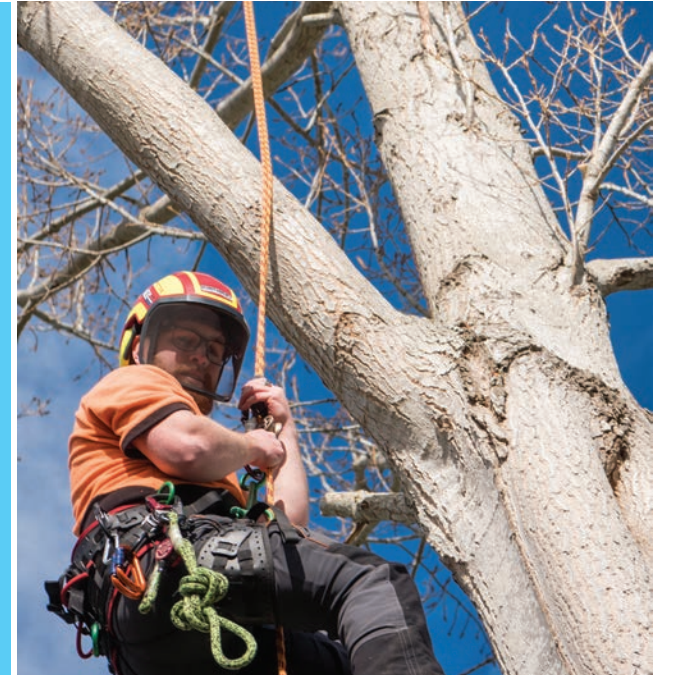
Arboriculture (*pruning, felling, transplanting, and maintaining the health of trees and shrubs*)

Amenity horticulture (*care, maintenance and growth of ornamental plantings*)

Landscape construction (*building and maintaining gardens and landscapes*)

Nursery production (*growing plants for sale*)

Sustainable horticultural practice



Certificate

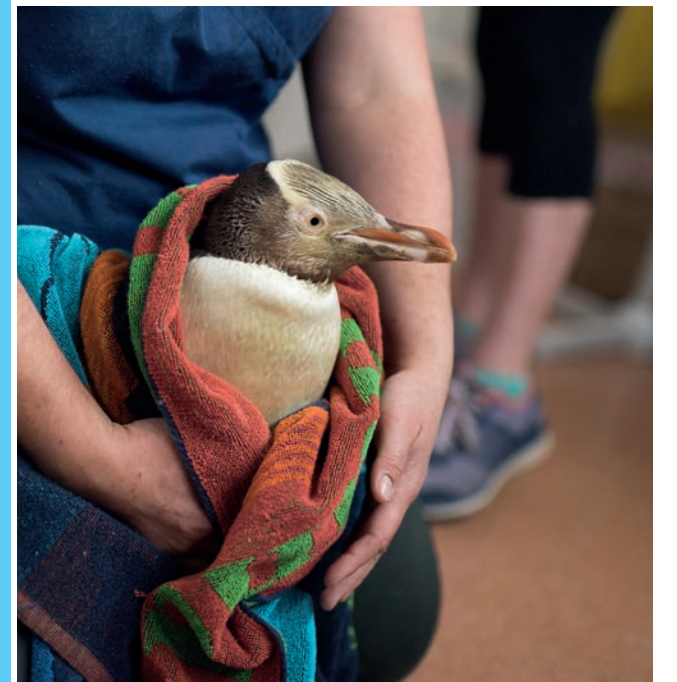
Diploma

## Veterinary Nursing

Animal Care > Rural Animal Technology  
Veterinary Nursing

**Where** Reception, N Block, Albany Street  
**When** 11.00am and 1.00pm

Veterinary or animal-related industries work to promote the health and welfare of animals, such as household pets and livestock. This may include administering medication and nursing sick animals, providing proactive and preventive health care, first aid/emergency treatment, animal breeding or working in a veterinary clinic, zoo or farm setting.





Certificate Diploma Degree Graduate Diploma

# Business, Tourism & IT

## Applied Business

Accounting > Applied Travel and Tourism  
Business Administration > Applied Management  
(Specialty)

### Travel and Tourism

**Where** Room D101, D Block  
**When** 9.30am–10.30am

There are many opportunities for skilled graduates in the tourism industry, and students graduate with a high level of customer service skills and sales ability.

Our specialty areas include travel, tour guiding, hospitality operations, conference and events, adventure tourism, sustainability, marketing and destination knowledge. You also have the opportunity to work in the tourism area of your choice.

### Business

**Where** Room D101, D Block  
**When** 10.30am–11.30am

The opportunities for our business management graduates are extremely varied. You may oversee the recruitment and retention of staff, devise methods to improve productivity and efficiency, manage stock, create new products and develop marketing strategies. You could eventually work your way up to senior management level or operate your own business.

## Information Technology

**Where** Room D101, D Block  
**When** 11.30am–12.15pm, 12.15pm–1.00pm

The computing and IT industry is dynamic and exciting with a wide range of roles such as working with clients to design and develop computer software through interactive web-based tools. Our hands-on programmes and industry projects allow you to develop high level technical abilities while exercising your problem-solving skills and creativity.



Certificate Diploma Degree Graduate Diploma

Postgraduate

## Dunedin School of Art

### TOURS

**Where** DSA main entrance, P Block, Riego Street  
**When** 10.00am, 11.30am and 3.00pm

### ART PRESENTATION

Showcase of exciting student work and discussion around career options.

**Where** DSA, Room 152, P Block, Riego Street  
**When** 12.00pm–1.00pm

Artists enhance our understanding of the world using objects and situations that are new, interesting and challenging. We believe that art education is about creating artists who contribute to many fields of visual culture, and creative flair is valued in a wide range of professions. You can design your own pathways within the eight disciplines we offer: Ceramics, Electronic Arts, Jewellery and Metalsmithing, Painting, Photography, Print, Sculpture, and Textiles.

Additional Art History and Drawing components support your ability to develop ideas and projects. Exceptional studio facilities, practising artists as lecturers and opportunities for work placements make the Dunedin School of Art a preferred choice.

Certificate Diploma Degree

## Food Design

Cookery > Culinary Arts > Food and Beverage Services > Hospitality Management

**Where** Manaaki, Harbour Terrace  
**When** 12.00pm–1.00pm

The hospitality industry offers excellent career opportunities here and overseas for those who enjoy working with others and providing competent, friendly service.

You can have a rewarding and successful career in many areas including cafés and restaurants, hotels, hospitals and catering companies.

### Culinary Arts

There are numerous opportunities for skilled graduates including restaurants and hotels, artisan businesses, management, media and technology, and tertiary teaching.

Our world-leading culinary arts qualification is the only one of its kind in the Southern Hemisphere and explores the concepts of multi-sensory cooking. Cutting edge culinary arts and creative design are brought together so you have the chance to create customised food experiences to delight and inspire.





Certificate Degree Graduate Diploma Postgraduate

# Design

Fashion > Communication > Product

## TOURS AND PRESENTATIONS

**When** 9.30am, 10.30am, 2.00pm

**Communication**  
**Where** Level 5, H Block

**Fashion**  
**Where** Level 4, H Block

**Product**  
**Where** Level 3, H Block

New Zealand's future is being designed by people like you! Designers are creative thinkers who want to challenge the status quo.

With your Otago Polytechnic design qualification in communication, fashion or product design you will gain the skills, training and experience to work in a range of rewarding creative fields.

Our programmes are taught by highly qualified and award winning tertiary teachers with extensive industry and professional experience. You will:

- learn in a highly supportive studio environment that caters for you as an individual and allows you to develop confidence as a designer.
- consider different perspectives and tackle important social issues
- work with clients and customers to create innovative designs, products, services and experiences.
- be part of successful teams and understand how designers can add value to multi-disciplinary teams.
- sharpen your visual, written and verbal presentation skills so you can communicate your new and exciting ideas to the world.

Degree

# Architectural Studies

Architectural Technologies > Interior Architecture

## TOURS AND PRESENTATIONS

**When** 9.30am, 10.30am, 2.00pm

**Where** Level 3, H Block

The building industry is facing a number of unprecedented challenges that need to be addressed competently and creatively. Become part of the architecture industry and design New Zealand's built environment.

Studies in Architectural Technologies or Interior Architecture will foster your talent to design and your ability to communicate ideas with confidence in a variety of media.

You will gain applied technical knowledge required to succeed in this growing industry. You will become confident in architecture history and theory and competent in constructing sustainable, inspiring environments.

Certificate Diploma

# Media

Digital Photography > Film and Television

**Where** Room G204, G Block  
**When** 1.30pm–2.30pm

If your passion is to supply information, news or entertainment to New Zealand and global audiences then media is the industry for you. There is a huge variety of options for roles and careers in this industry – film and television, media communications and photography.

With our industry-relevant media programmes you will be able to demonstrate to employers that you have the skills, qualifications and practical experience to hit the ground running.





Certificate Diploma Degree

# Construction & Engineering

Automotive > Electrical Engineering > Mechanical Engineering > Civil Engineering > Carpentry  
Quantity Surveying / Construction Management

## Mechanical & Automotive Trades

Certificate in Engineering (Level 3)

**Where** Room A202, A Block  
**When** 12.30pm–1.00pm

Designed to give you the basic skills in fabrication, welding and machining. This programme will provide you with the skills and work experience necessary to obtain an apprenticeship in one of the mechanical engineering trades. Completion of this certificate will credit your year one study once you take up an apprenticeship.

Certificate in Automotive and Mechanical Engineering (Level 2)

**Where** Room A134, A Block  
**When** 10.00am–10.30am

This is the ideal programme to introduce you to the automotive and mechanical engineering industries. It also is an excellent pathway into our Level 3 automotive and mechanical engineering pre-trade programmes. Fees for this programme are covered by the Youth Guarantee Scheme (conditions apply).

New Zealand Certificate in Automotive Engineering (Level 3)

**Where** Room A201, A Block  
**When** 12.00pm–12.30pm

Employment in the automotive industry involves repairing, maintaining, modifying and selling vehicles and vehicle parts. You may choose to specialise in working with one type of vehicle, product or service.

## Electrical Trades

**Where** Room A118, A Block  
**When** 12.30pm–1.00pm

**Certificate:** Electricians install, maintain and repair electrical wiring and electric or electronic equipment. You may study and interpret wiring diagrams, install and maintain electrical cables, service electrical machines and test electrical work for safety. The New Zealand Certificate in Electrical Engineering Theory (Level 3) is a pre-trade qualification to prepare you for this career.

## Carpentry

**Where** Room L114, L Block, Anzac Avenue  
**When** 11.00am–11.30am

Carpenters may build anything from new homes through to sports stadiums. Because this industry is so diverse, a large selection of job opportunities exist in related building areas.

Enjoy the hands-on training in our workshops and the opportunity to be involved in real-world, community-based projects.

Diploma Degree

## Quantity Surveying/ Construction Management

**Where** Room L105, L Block, Anzac Avenue  
**When** 11.30am–12.00pm

These careers concentrate on getting buildings constructed on time, up to standard and on budget. Both bring challenges and satisfaction with each project.

Quantity surveyors are the costing and financial experts in the construction industry. Construction managers control the construction process making sure the right people, materials and equipment are available at the right times so projects can be completed to the required standards.

Diploma Degree

## Civil Engineering

MORNING

**Where** Room L147, L Block, Anzac Avenue  
**When** 10.00am–10.30am

AFTERNOON

**Where** Room L143, L Block, Anzac Avenue  
**When** 12.00pm–12.30pm

Civil engineering graduates are important participants in the design, construction and project management of civil works such as roads, dams, earthquake engineering, tunnelling, water and sewerage systems, and mining operations. Be responsible for the project management of these jobs, which may include efficiently managing the manpower, machinery, materials, money and environment.

## Electrical Engineering

**Where** Room A118, A Block  
**When** 12.30pm–1.00pm

Electrical engineers design and supervise the installation and ongoing maintenance of electrical systems, machinery, electrical distribution networks, control systems and building services. Our programmes will ideally place you to enter this rewarding and in-demand career.

## Mechanical Engineering

**Where** Room L143, L Block, Anzac Avenue  
**When** 1.00pm–1.30pm

Mechanical engineers are multi skilled problem solvers and project managers that work primarily in the fields of mechatronic, fluids, thermodynamics and the design of anything with moving parts from mechanical pencils to space stations.

## Bridging option:

Bridging certificate to New Zealand Diploma in Engineering

Designed to enable students to access NZ Diplomas in Engineering (Mechanical, Civil, and Electrical), the emphasis is on mathematics and science for those who do not yet meet the entry criteria. This programme will not be covered at the Foundation Studies session.

Please email [ecladmin@op.ac.nz](mailto:ecladmin@op.ac.nz) for more information.







### Health Bridging option:

New Zealand Certificate in Study and Career Preparation (Level 3)  
New Zealand Certificate in Study and Career Preparation (Level 4)

If your goal is to enter one of our programmes in the health and community area, but you think you might not meet our entry requirements, our health bridging option will prepare you for the challenges of more advanced study.

**Please attend any of the Nursing, Midwifery, Occupational Therapy or Social Services seminars to get more information. This qualification can also lead to the Bachelor of Applied Science (Physical Activity, Health and Wellness).**

Diploma Degree

## Nursing

MORNING

**Where** Room G106, G Block  
**When** 9.30am–10.30am

AFTERNOON

**Where** Room H206 A/B and H225, H Block  
**When** 2.00pm–3.00pm

Nursing is one of the fundamental professions in health care throughout the world. It is a rewarding career that makes a difference in people's lives. With access to state-of-the-art facilities and the latest industry knowledge, you will gain the experience and confidence to enter the health care profession.

Degree Postgraduate

## Occupational Therapy

**Where** Room G323, G Block  
**When** 9.30am–10.30am, 11.00am–12.00pm

Work as an occupational therapist to promote health and wellbeing and to help people become involved in everyday activities and lead meaningful and satisfying lives. You may work in schools with children with disabilities, in rehabilitation settings or in hospitals to enable older patients to return to a safe home environment. Other career opportunities include working with people who have head injuries or mental health issues, and adapting workplace environments for clients.

Degree Postgraduate

## Midwifery

**Where** Room H608, H Block  
**When** 11.00am–12.00pm

Midwives provide maternity care to both women and their babies from early pregnancy through to six weeks postnatal. Midwives are responsible for care in uncomplicated pregnancy and childbirth, and collaborate with medical and midwifery colleagues if complications arise.

Certificate Degree Graduate Diploma

### Social Services

## Counselling, Career Practice, Disability Support and Mental Health Support

**Where** The Hub  
**When** 1.00pm–2.00pm

Social services help people to improve their quality of life. There are career opportunities in the fields of counselling, disability, social services, mental health support work and targeted assistance for the elderly and families. Your work may include offering support and guidance to clients, planning activities, running educational workshops or directly assisting families, groups and organisations.

Certificate

## Early Childhood

**Where** The Hub  
**When** 1.00pm–2.00pm

Working with children is a rewarding, challenging, fun and diverse career. This introductory programme helps you gain the core skills and knowledge to prepare you to undertake the higher level learning required for employment in the early childhood sector.





Certificate Diploma Degree  
Graduate Diploma Postgraduate

## Sport & Adventure

Applied Science > Personal Training > Sport Management & Coaching > Outdoor Leadership & Management

**Where** Room Z114, Sargood Centre  
**When** 10.30am–11.30am, 2.00pm–3.00pm

The sport, health and adventure industry offers excellent career opportunities for those who like helping and bringing out the best in those around them. Our graduates may work in all areas of the sport, exercise and health sectors. This can range from – administration, delivery and management in a range of settings. Our graduates work in schools, events, gyms, facilities, clubs, regional organisations, national organisations, and the private sector. You could plan fitness and training programmes, encourage people into healthier lifestyles or manage events. You could work in a variety of outdoor locations teaching activities such as kayaking, rock climbing and tramping.

Certificate Diploma

## Massage Therapy

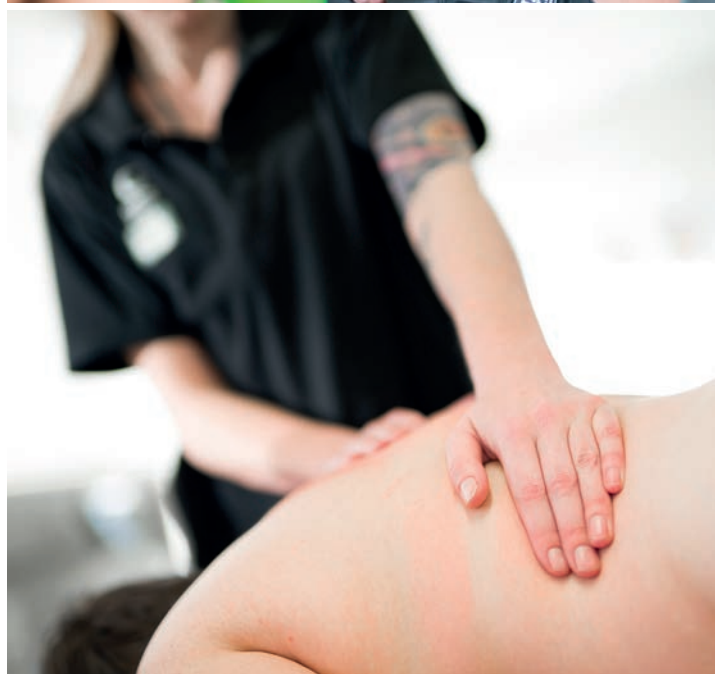
**Where** G103, G Block  
**When** 12.00pm–1.00pm

Massage therapy is a diverse area which includes wellness and relaxation massage, stress management, sports massage and therapeutic massage.

All the different forms of massage involve the study of anatomy and physiology and the development of specific techniques to target particular areas of the body. Sports and therapeutic massage therapists help clients recover from pain, rehabilitate from injury or improve sporting performance.

Join us for a free relaxing chair massage!

**Where** The Hub  
**When** 11.30am–1.00pm



Certificate Diploma

## Beauty Therapy

**Where** The Hub  
**When** 12.00pm–1.00pm

Beauty therapy roles are varied, creative and in demand. Employers are seeking trained therapists with the ability to walk into a new job and to work with clients straight away. Our top quality facilities and programmes are recognised as some of the best in the industry. International Therapy Examination Council (ITEC) qualifications are optional in our Level 4 Certificate and Level 5 Diploma and if you choose to complete the exam, your qualifications will be recognised by employers and clients internationally.

Join us for skin analysis under UV lights!

Certificate

## Hairdressing

**Where** The Hub  
**When** 12.00pm–1.00pm

The hairdressing industry is exciting and ever-changing. Hairdressing skills are highly transferable which gives you access to lots of employment opportunities.

Our hairdressing programmes have strong alignment and links with the industry. The connections that our tutors have with local businesses and their involvement in the industry results in high rates of our graduates gaining successful apprenticeships and these ties with industry also ensure that you are given current information about technologies and trends in hairdressing.

Join us for a free quick hair makeover – including braiding, straightening and curling!





Certificate Diploma

# Central

Cookery > Viticulture > Horticulture > Snowsports and Avalanche Safety > Sports Turf Management Farming > StoneMasonry > Carpentry > Automotive Bicycle Mechanics > Brewing

Where The Hub  
When All day

Central Otago is one of the most unique and exciting destinations in all of New Zealand and your experience as a student will be like no other!  
Our Central Otago campus offers qualifications that celebrate the region's special flavour, including cookery, viticulture, horticulture and snowsports, alongside programmes you won't find anywhere else in the country, like sports turf management and stonemasonry.



# Te Punaka Ōwheo

Where Te Punaka Ōwheo and Poho  
When All day

Te Punaka Ōwheo is Otago Polytechnic's Māori Centre. Staff will be on hand to talk about what support we can offer and where to find information about Māori scholarships.



## Programme Timetable

All day	Study at Central	The Hub
All day	Te Punaka Ōwheo	Te Punaka Ōwheo and Poho
9.30am	Occupational Therapy	Room G323, G Block
9.30am	Nursing	Room G106, G Block
9.30am	Architectural Design	Level 3, H Block
9.30am	Product Design	Level 3, H Block
9.30am	Fashion Design	Level 4, H Block
9.30am	Communication Design	Level 5, H Block
9.30am	Travel and Tourism	Room D101, D Block
10.00am	Art Tour	DSA main entrance, P Block, Riego Street
10.00am	Veterinary Nursing	Reception, N Block, Albany Street
10.00am	Automotive and Mechanical Engineering	Room A134, A Block
10.00am	Civil Engineering (Diploma/Degree)	Room L147, L Block, Anzac Avenue
10.30am	Sport and Adventure	Room Z114, Sargood Centre
10.30am	Product Design	Level 3, H Block
10.30am	Architectural Design	Level 3, H Block
10.30am	Fashion Design	Level 4, H Block
10.30am	Communication Design	Level 5, H Block
10.30am	Business	Room D101, D Block
11.00am	Midwifery	Room H608, H Block
11.00am	Veterinary Nursing	Reception, N Block, Albany Street
11.00am	Occupational Therapy	Room G323, G Block
11.00am	Carpentry	Room L114, L Block, Anzac Avenue
11.15am	Horticulture, Arboriculture and Landscape Construction	L Block foyer, Anzac Avenue
11.30am	Chair Massages	The Hub
11.30am	Art Tour	DSA main entrance, P Block, Riego Street
11.30am	Quantity Surveying/ Construction Management	Room L105, L Block, Anzac Avenue

Time	Presentation/tour	Where
11:30am	Information Technology	Room D101, D Block
12.00pm	Foundation Studies	The Hub
12.00pm	Beauty Therapy	The Hub
12.00pm	Hairdressing	The Hub
12.00pm	Food Design	Manaaki, Harbour Terrace
12.00pm	Art Presentation	DSA, Room 152, P Block, Riego Street
12.00pm	Automotive Engineering	Room A201, A Block
12.00pm	Civil Engineering (Diploma/Degree)	Room L143, L Block, Anzac Avenue
12.00pm	Massage Therapy	Room G103, G Block
12.15pm	Information Technology	Room D101, D Block
12.30pm	Electrical Engineering (Diploma/Degree/Trades)	Room A118, A Block
12.30pm	Engineering (Certificate)	Room A202, A Block
1.00pm	Mechanical Engineering (Diploma/Degree)	Room L143, L Block, Anzac Avenue
1.00pm	Social Services	The Hub
1.00pm	Early Childhood Studies	The Hub
1.00pm	English Language	The Hub
1.00pm	Veterinary Nursing	Reception, N Block, Albany Street
1.30pm	Horticulture, Arboriculture and Landscape Construction	P Block, Riego Street
1.30pm	Media	Room G204, G Block
2.00pm	Product Design	Level 3, H Block
2.00pm	Architectural Design	Level 3, H Block
2.00pm	Fashion Design	Level 4, H Block
2.00pm	Communication Design	Level 5, H Block
2.00pm	Sport and Adventure	Room Z114, Sargood Centre
2.00pm	Nursing	Room H206 A/B, H Block
2.00pm	Nursing	Room H225, H Block
3.00pm	Art Tour	DSA main entrance, P Block, Riego Street



# Forth Street Campus

