

Karakia & Waita

Manawa mai te mauri
nuku
Manawa mai te mauri
rangi
Ko te mauri kai au
He mauri tipua
Ka pakaru mai te po
Tau mai te mauri
Haumi e, hui e, taiki e



Te aroha
Te whakapono

Nurturing Pasifika Learners through Effective Pedagogy: A case study of a programme at Unitec/Te Pūkenga New Zealand

Teaching Excellence Symposium 2023



Thursday, 29 June 2023 Ali Rasheed UNITEC

Introduction

- NZCHW Programme
- Purpose
- Initiatives
- Student Support



Objectives

- Objectives
- Pedagogical approach
- Models of learnings



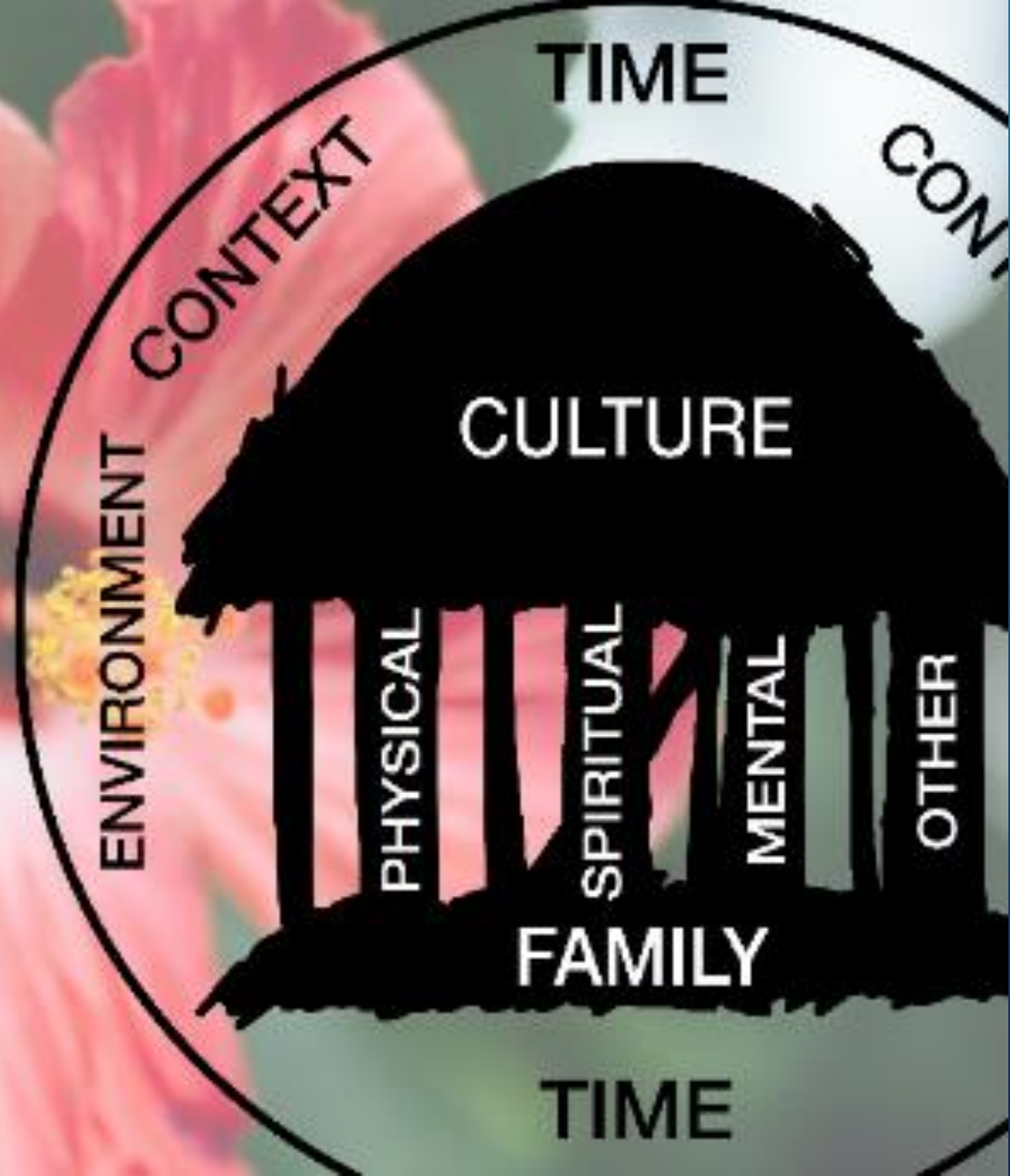
Background

- Pasifika Community
- Significance of Programme
- Who is Pasifika Community



Pacific Models of Learning

- Key features of the model
- Concepts
- Talanoa
 - Fa'aaloalo (Respect)
 - Va (Relationships)
 - Fale (Community)



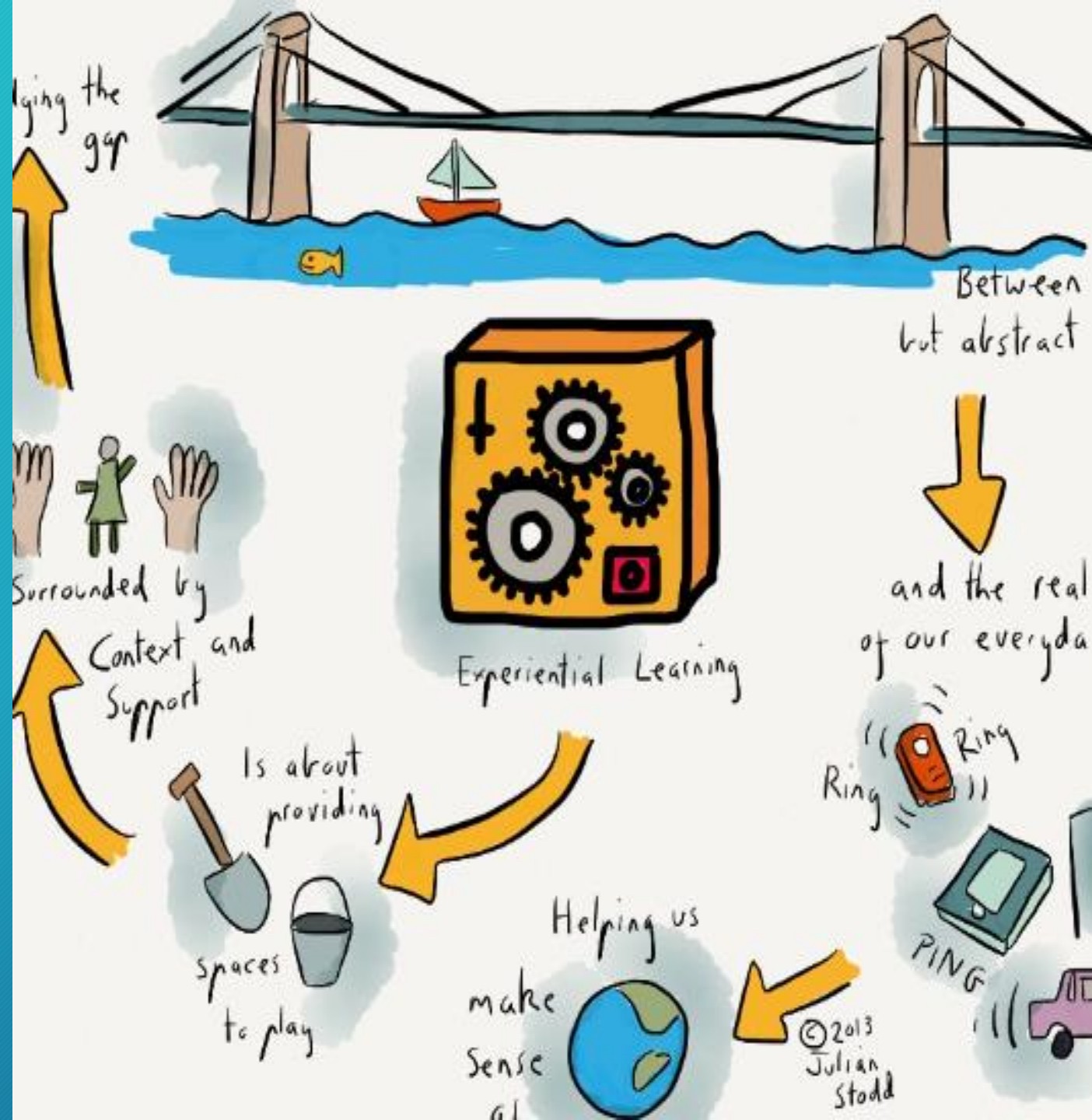
Collaborative Learning

- Advantages
- Shared Learning Experience
- Group Projects & Activities
- Peer Learning & Mentoring
- Workshop discussions.



Experiential Learning

- Role
- Hands on Experience
- Real world scenarios
- Simulation & Role Plays
- Case studies and problem-based learning



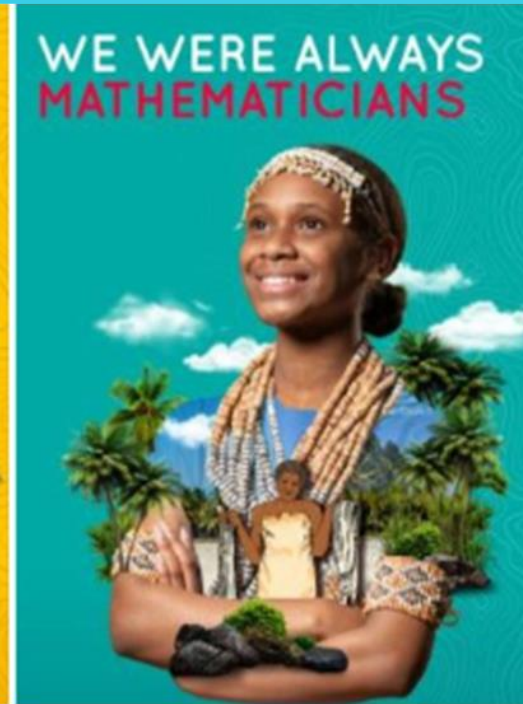
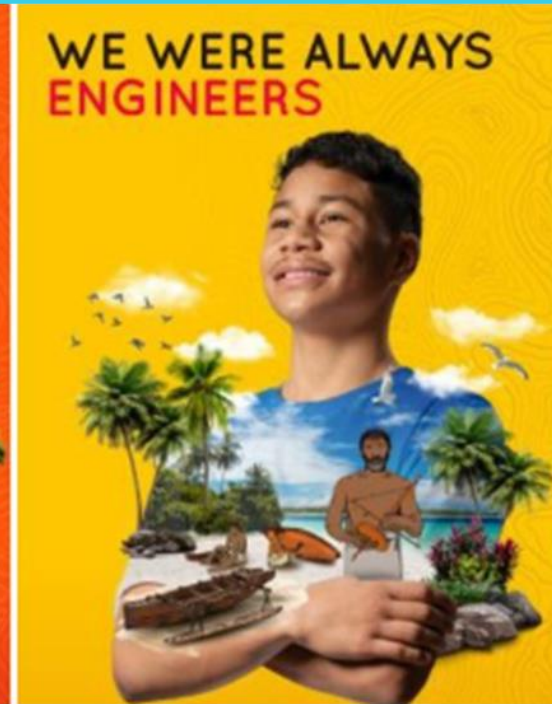
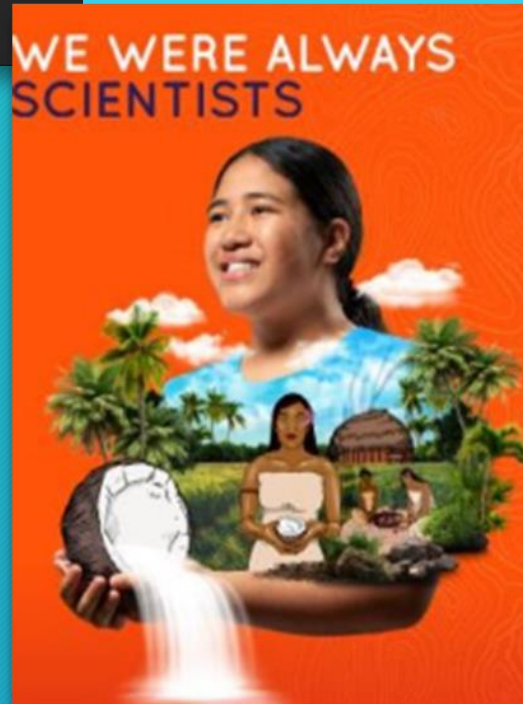
Strong Relationships with Pasifika Learners & Communities

- Importance
- Relationships
- Engage them as active partners



Student Success Stories

- Highlights
- Achievements
- Transform Communities



Conclusion

- Positive Impacts
- Further exploration
- Building relationships
- Fostering a sense of belonging
- Investing in good relationship





Questions

Closing Karakia

Ka wehe atu tatou
I raro I te rangimarie
Te harikoa, me te
manawanui
Haumi e, Hui e, Taike e

