

New Zealand Diploma in Cookery (Advanced) (Level 5) (Cookery)

[APPLY Download PDF](#)

Domestic fee: \$7,716

APEL fee: Fee on application

International fee: \$22,830

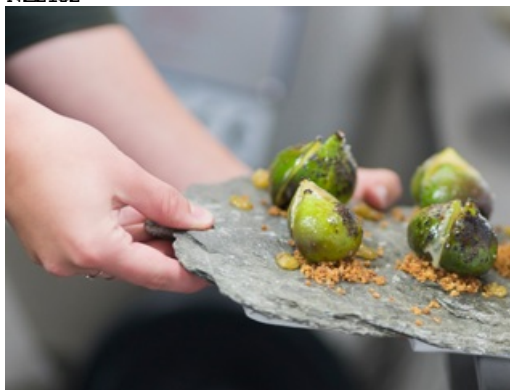
Ask A Question

Your name Email NZ phone number

(if applicable) Message Please tick the box to continue

Thank you for your interest. If you experience any difficulties with submitting this form, please email info@op.ac.nz or call us on 0800 762 786 (NZ) or +64 3 477 3014 (Intl.)

► NZZ102
NZZ102



Location

In work

Duration

One year full-time; two years part-time

Delivery

From the Central Otago Campus

In work with online learning (portfolio-based), workshops and masterclasses

From the Dunedin Campus

In work plus an application of prior learning process which matches your existing experience and knowledge against this programme

Credits

120

Level

5

Start

Rolling intake from February

Apply

Anytime

- Location
Intake
Study breaks
- Central Otago
15 February 2021
28 June 2021 - 16 July 2021
5 April 2021 - 16 April 2021
27 September 2021 - 8 October 2021
- Dunedin
22 February 2021
- Central Otago
21 February 2022
16 May 2022 - 3 June 2022

Earn while you learn with our in-work cookery programme!

Designed for those already working in a culinary environment, you'll design your own advanced dishes and menus; learn how to manage workflow, staffing and supplies in a commercial kitchen; develop a deep understanding of sustainable practice; and ensure you're current with regional, national and global cuisine trends.

We offer this programme from both our Central Otago and Dunedin campuses.

Our Central Otago offering involves a series of bespoke masterclasses which will ensure learning is tailored to your needs. You'll also take part in five, three-day workshops and five, in-work check-in days.

Our Dunedin offering involves an application of prior learning process (APEL) and our expert staff working one-on-one with you in the workplace to meet your needs.

Working while learning with both options will enable you to reflect on and analyse your current practice and implement changes to how you work.

- ▶ Entry requirements
- ▶ Selection process
- ▶ More about the APEL process
- ▶ You will study
- ▶ Your workload
- ▶ Further study options
- ▶ Student loans and allowances
- ▶ For more information
- ▶ Apply Now